

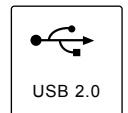
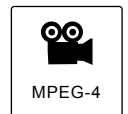
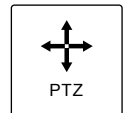
# P-8504

## Network Video Server Recorder

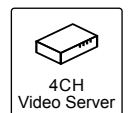
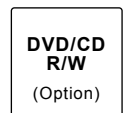
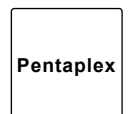
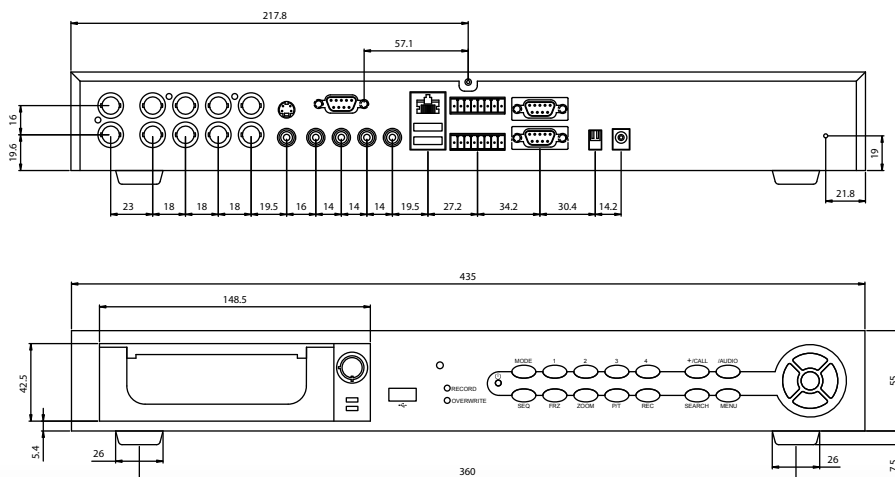


### MAIN FEATURES

- MPEG-4 Advanced Simple Profile (ASP) for DVR storage & network streaming
- Integrated internet video server, remote operation via simple web browser
- 120/100 FPS compression engine, real-time (30/25 FPS) live / record / playback / streaming for each channel simultaneously
- Smart event video with real-time frame rate / quality adjustment to efficiently reduce disk space and network traffic
- HTTP internet communication, web UI to manage complete system functionalities
- Independent streaming of each live/playback channel by standard RTSP protocol, easy system integration for cross platform
- NTP (network time server) with DST supported which provide accurate unify system time
- Event handling trigger by time/alarm/motion and action to send video clip by Email / FTP



### DIMENSION DIAGRAM



# P-8504 Network Video Server Recorder



System	
System	32-Bit RISC Processor, 8MB Flash ROM, 64MB SDRAM
RTC	Hardware chip to provide accurate system date/time
Watchdog	Chip to monitor system voltage tolerance and abnormal program execution
HDD	2x ATA133 IDEs support up to 2 HDD
USB 2.0 Host Port	3 ports support external storage for extend recording or backup purpose
Pan / Tilt / Zoom control	Pelco-P, Pelco-D, Lilin, Dynacolor
GPIO	4x fully opto-isolated sensor inputs; and 4x relay outputs
Password Control	3 Levels: Administrator / Operator / User
Buzzer	Alert for Event coming, System status
Upgrade System Firmware	Via local USB 2.0 & remote FTP
Web UI	Customized via FTP & CGI
Local Input Devices	Device front panel keypad, IR Remote controller

Video	
Video Standard	NTSC/PAL DIP switch selectable
Operation	Pentaplex Operation (Local Live/Playback,Recording,Access Control/Backup,Remote Live/Playback,Remote Access Control)
Streaming Format	MPEG-4 ASP / MJPEG, Dual streaming
Streaming Mode	Live (Multiple clients supported), Playback (with smart search Time/Event)
Streaming Protocol	RTSP over TCP/UDP
Input Channels	BNC x 4, 1.0Vp-p, 75 ohm
Outputs	Main Monitor BNC x 1, 1.0Vp-p, 75 ohm, S-Video x 1 Call Monitor BNC x 1, 1.0Vp-p, 75 ohm Loop Back BNC x 4, 1.0Vp-p, 75 ohm
Video Adjustment	Brightness, Contrast, Hue, Saturation
Local video operation	2x2 digital zoom, freeze, sequence, covert, speed key for call monitor, automatic scaling for playback

Audio	
Input Channels	RCA x 4
Output Channels	RCA x 1 selectable for Live, Playback, or Both
Compression Method	ADPCM/PCM 8KHz sampling

Recording	
Recording Mode	Always recording, Schedule, Alarm Input, Motion Detection
Recording Resolutions	NTSC: Max. 120 FPS @ 352x240 Max. 60 FPS @ 720x240 Max. 30 FPS @ 720x480 PAL: Max. 100 FPS @ 352x288 Max. 50 FPS @ 720x288 Max. 25 FPS @ 720x576
Recording Quality	8 Level preset, manually adjustable by each channel, automatic frame rate / quality adjust when event coming
Pre/Post-Alarm	Yes
Storage	2x internal and 3x USB 2.0 HDD, Selectable overwrite by priorities

Playback Method	
Smart Search	Date/Time, Events from either backup or recording HDDs
Playback Method	Play, Stop, Pause, Rewind, Forward, Slow
Speed Control	Yes, 1/32X, 1/16X, 1/8X, 1/4X, 1/2X, 1X, 2X, 4X, 8X, 16X, 32X

Storage	
Internal	1 x built-in IDE HDD 1 x IDE HDD Mobile Rack
External	3 x USB2.0 HDDs or Flash storage supported for either record or backup or configuration save/retrieve (4GB minimal requirement for recording)

Event Management	
Event Trigger	Motion detection, Video Loss, Alarm Input
Motion Detection Setting	Configurable detection areas (11x9 blocks) and sensitivity (5 level) for each channel
Video Loss Detection	Programmable
Action	Alarm output, Email, FTP
Auditory Alert	Built-in buzzer

Network	
LAN Port	10/100 Base-T Ethernet
Protocols	TCP(UDP)/IP, HTTP, FTP, SMTP, DHCP, NTP, DNS, DDNS, RTSP, RTP/TCP(UDP), PPPoE
IP Setup	IP Installer (Windows Application), DHCP & Static IP, PPPoE
LAN Remote Access	IE Browser, Windows Application
LAN Remote Operation	Live view, Playback, System setup, PTZ control, Virtual IR remote for fully control

General	
Operation Temperature	0° ~ 50°C
Operation Humidity	20% ~ 80% RHG
Power Supply	AC/DC switching power adapter, input: AC100 ~240V, output: DC 12V/4A
Power Consumption	1A (w/o HDD)
Dimension	436(W) x 333(D) x 62.5(H) mm
Net Weight	4.4 kg
I/O	10 x BNC connectors (1 x Call Monitor, 1 x Main Monitor, 4 x Video In, 4 x Video out) 1 x S-Video (Main Monitor) 5 x RCA (4 x Audion In, 1 x Audio Out) 1 x RJ-45 Ethernet connector with 2 LEDs (power/status) 3 x USB 2.0 Host Ports 2 x Terminal Blocks (1 x COM, 1 x GPIO) 2 x DB9 Connectors (1 x COM, 1 x Console) 1 x 2-Pin Dip switch 1 x DC In connector 3 x LEDs (Record/Overwrite/Power) 1 x IR Receiver 1 x Front panel keypad set
Package Contents	1 x CD (manual and software) 1 x ACDC Power Adapter & Power core 1 x IR remote controller 2 x Battery (AAA) 2 x Rack bracket 1 x screw pack