

PiXORD-201 Network Camera

The new design makes your security more stylish

The additional functionality of the PiXORD-201 includes support for remote recording and full screen monitoring. Brand new GUI makes it easy to view live images via web browsers.



Main Features

- Remote recording to PC
- Full screen monitoring
- Multi-language support
- 90° / 180° / 270° image rotation

PIXORD-201 Network Camera

The new design makes your security more stylish

Specifications

Hardware

System

CPU: 32 Bits RISC Processor
ROM: 2M Bytes Flash ROM
RAM: 16M Bytes SDRAM
WatchDog: Chip to monitor out tolerance system voltage and abnormal program execution

Connector

Two LEDs to indicate network and power/system status
One RJ-45 for Ethernet
One RS-232 serial port for external console
One RS-485 port for PTZ (pan/tilt/zoom) camera control
Four fully opto-isolated alarm inputs and one 3A, 125VAC/ 30VDC Relay output

Video Channel

1/4" internal CCD
HORIZONTAL resolution: More than 380 lines
1 Lux (F2.0)

Video

Lens

Standard Package: equipped with CS mount Focal length 6.0mm F1.8 Lens.
Supporting of Direct Drive Lens; Build-in VR for DC level adjustment.
Optional: Focal lens 4.0mm, Auto DC Iris F1.2~64 Lens
Vari-Focal lens 3.2~10mm, Auto DC Iris F1.4~360 Lens

CCD adjustment

White Balance: Auto
Automatic Gain Control: Open / Close
Electronic Shutter: Open / Close

Image Compression

JPEG, Motion JPEG

Video Adjustment

Brightness, Contrast, Hue, Saturation, Video quality adjustment

Resolutions

NTSC: 704x480, 352x240, 176x112 PAL: 704x576, 352x288, 176x144

Network

Network Interface

Ethernet (10/100 Base-T)

Protocols

TCP/IP, UDP, ARP, ICMP, HTTP, FTP, Telnet, SMTP, DHCP

Performance

Network throughput: Max. Up to 800K bytes / sec.
30 connections simultaneously
Up to 30/ 25 fps

Operating Environment

Operating Temperature

5° ~50°C (40° ~ 125°F)

Input Voltage

DC 12V

Power Consumption

<10 watts

Mechanical Design

Dimension

135(L)*85(W)*40(H) mm

Accessories

CD Title with manual/software
Quick Installation Guide
Ethernet Cable
CS Ring adjust tool
Power Adapter
Stand for Desktop/Wall/Ceiling
One cable convert MiniDin to Dsub, to connect Com port or GPIO

Management

Function

Supports remote recording
Supports display rotation
Supports full screen display
Multi-Languages support

Event management

Programmable Event Scripting

Triggered: 1.Time (Frequency)

2.Sensor Input

3.Motion Detection

4.Video/ Network status

5.CGI trigger

Action: 1.Store image to internal buffer (2M Bytes pre and post-alarm)

2.FTP image to remote site

3.E-mail image to specific account

4.HTTP server push to remote site

5.Relay output to control external devices

6.Alert transmission to an HTTP listen server (for developers)

Installation

Using ARP & Ping or IP-Installer software to assign the IP address

Firmware Upgrade

Remote upgrade by FTP

Customized web UI is upgradeable via FTP and Telnet

Client PC Requirements

Standard browser such as Microsoft 5.x or above, running on Windows Me/ 2000/XP, Linux.

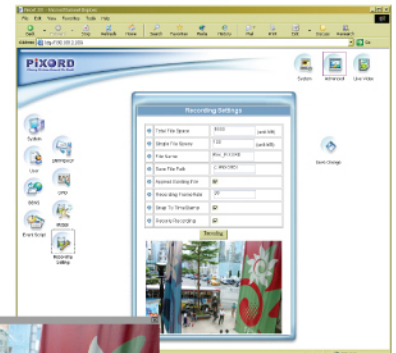
Security

Multi-tiered access control

Recording

Free 4-CH recording software

Remote recording →



← Full screen monitoring

Remote surveillance →

