

# Component Install

## User's Manual

**Version:1.0**

**Date:06/01/06**

# Catalog

1 Steps Of Use.....	3
1.1 Step one.....	3
1.2 Step two.....	3
1.3 Step three.....	3
1.4 Step four.....	3
1.5 Step five.....	4

# 1 Steps Of Use

## 1.1 Step one

If your PiXORCom in the computer isn't the latest edition, please delete first , then download latest edition of the PixordCom.cab ◦

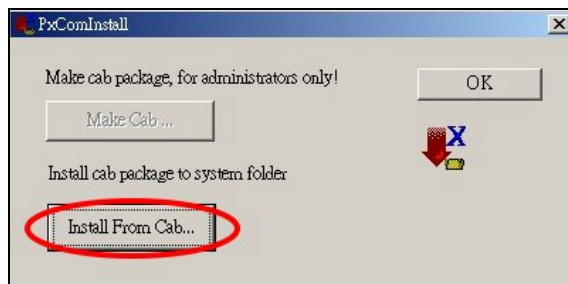
## 1.2 Step two

Then puts the PxComInstall.exe of the download with latest edition of the PixordCom.cab in the same folder ◦



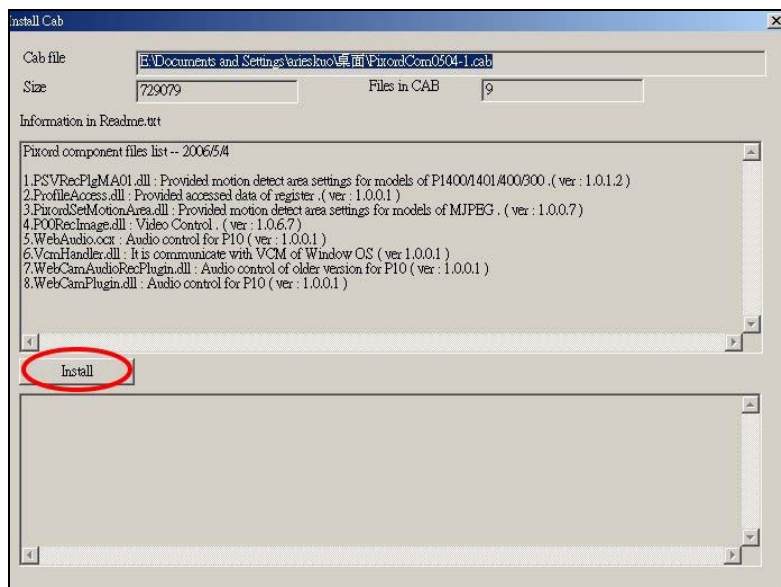
## 1.3 Step three

Activate PxComInstall.exe , then click the "Install From Cab..." button ◦



## 1.4 Step four

Then click "Install" button ◦



## 1.5 Step five

If it appears "Operation successful done" that represent installation is successful ◦

