



PIXORD Mobile for Pocket PC 2003

User Guide

Version 1.02R040323

March 23, 2004

1 Introduction

1.1 What is PiXORD Mobile Software?

PiXORD Mobile software provides a convenient way to view the video feed from PiXORD network video cameras and servers with a pocket pc running the Microsoft Pocket PC 2003 operating system.

For more information about PiXORD and the PiXORD line of digital video surveillance products please visit the Web site at <http://www.pixord.com>.

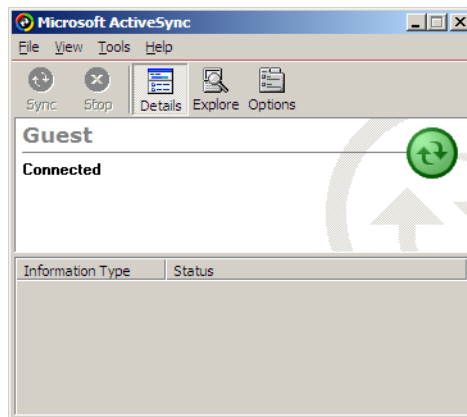
1.2 System Requirements

- ▶ A Pocket PC device with an ARM or XScale processor
- ▶ Microsoft Pocket PC 2003
- ▶ An Ethernet connection (wired or wireless)
- ▶ Microsoft ActiveSync

2 Installation

2.1 Installing Using Setup Wizard

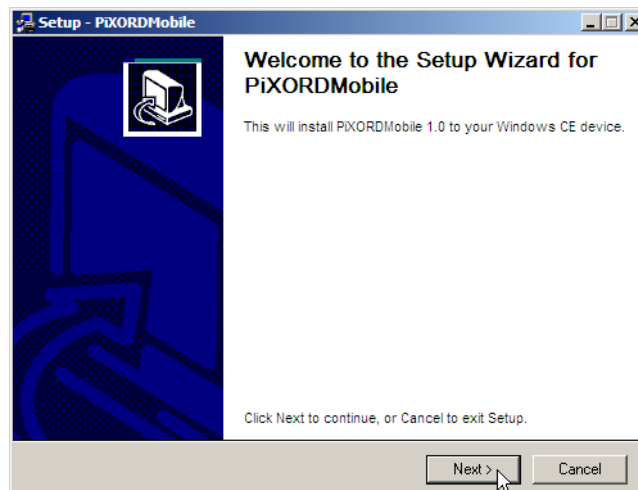
2.1.1 Connect to the device with Microsoft ActiveSync.



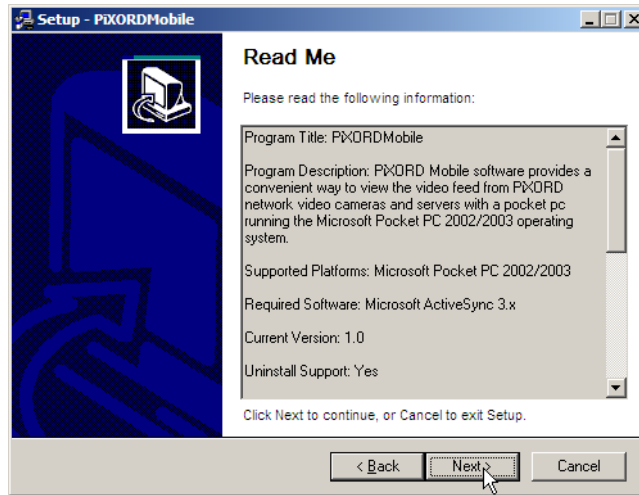
2.1.2 On the host PC, locate and run the PiXORDMobile_setup.exe file.



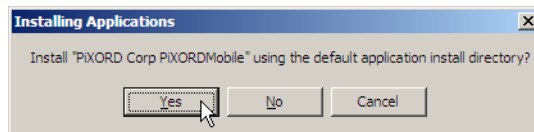
2.1.3 At the Welcome to the Setup Wizard for PiXORDMobile screen, click **Next**.



2.1.4 At the Read Me screen, please read the information, then click **Next**.

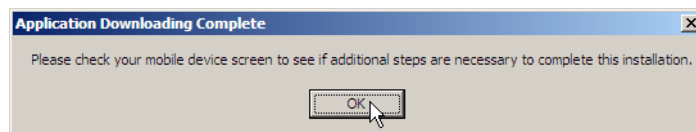


2.1.5 Since the device is connected to Microsoft ActiveSync (step 1), an Installing Applications notification should pop-up. Click **Yes** to install PiX-ORDMobile to the default directory on the pocket PC.



If the device is not connected to the host PC via Microsoft ActiveSync, the next time the device connects it will install the application (steps 5 and 6).

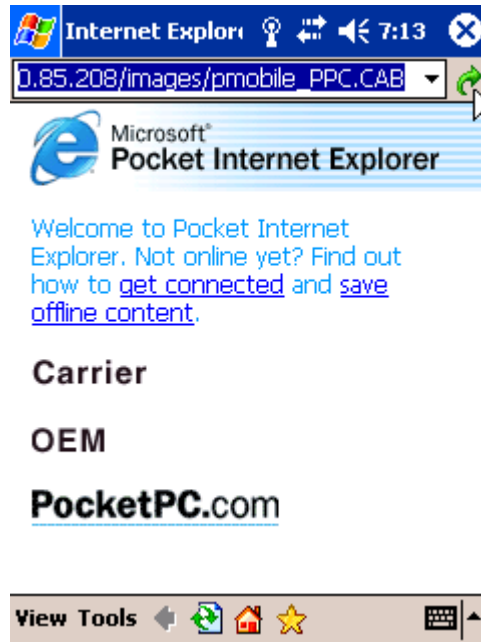
2.1.6 When the application has installed successfully, click **OK** to close the Application Downloading Complete notification.



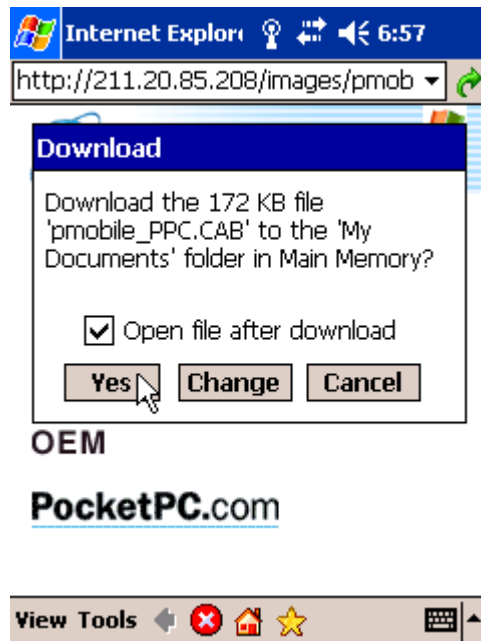
2.1.7 The installation is complete. To uninstall the application, use the Microsoft ActiveSync Tools > Add/Remove Programs wizard, or on the pocket PC, use Start > Settings > System > Remove Programs.

2.2 Installing Directly from the Web

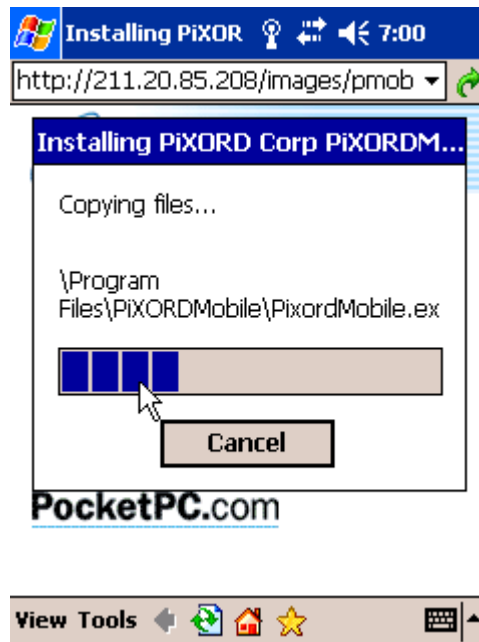
- 2.2.1 On the pocket PC open a Microsoft Pocket Internet Explorer window and enter the PiXORD Web site, <http://www.pixord.com> and browse to the download section where the **pmobile_PPC.CAB** file can be downloaded.



- 2.2.2 At the download prompt select **Open file after download** to allow the file to install automatically after download, then tap **Yes**.



- 2.2.3 The installation is completed after an installation progress prompt is displayed onscreen.



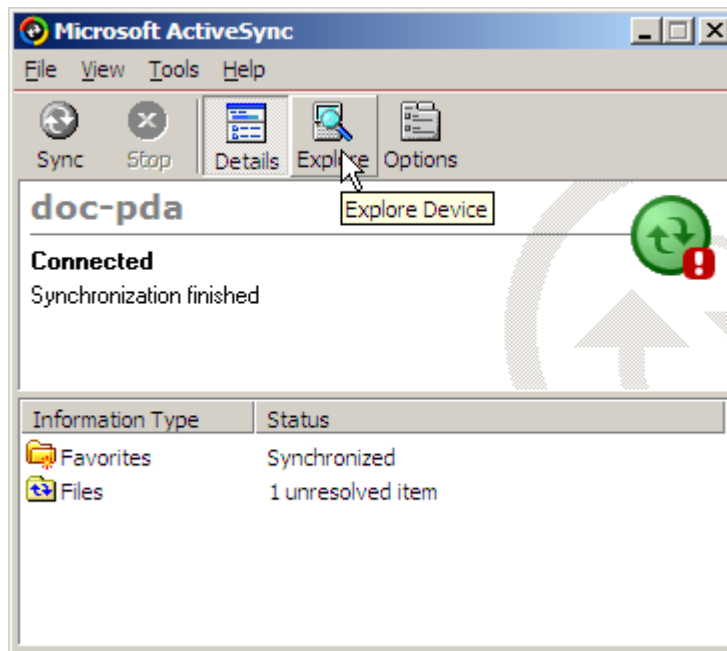
2.3 Installing the Program File Only

- 2.3.1 On the host PC Locate and copy the PixordMobile.exe file to the clipboard.

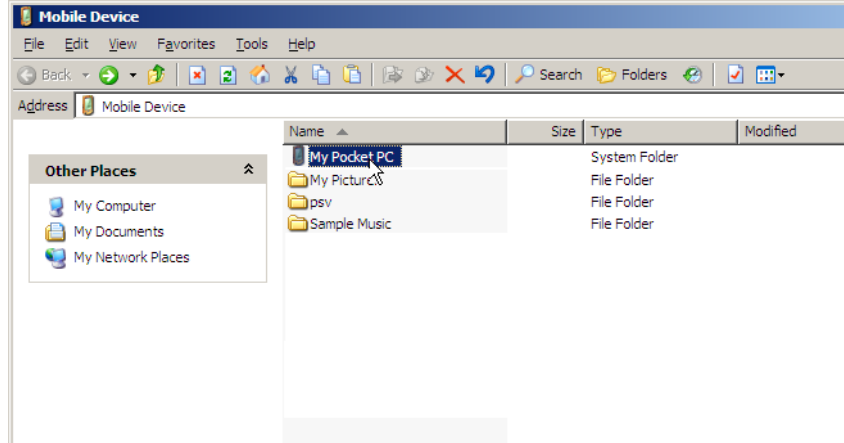


- 2.3.2 The most convenient method to transfer the file to the device is to use Microsoft ActiveSync. After connecting to the device by USB, Infrared,

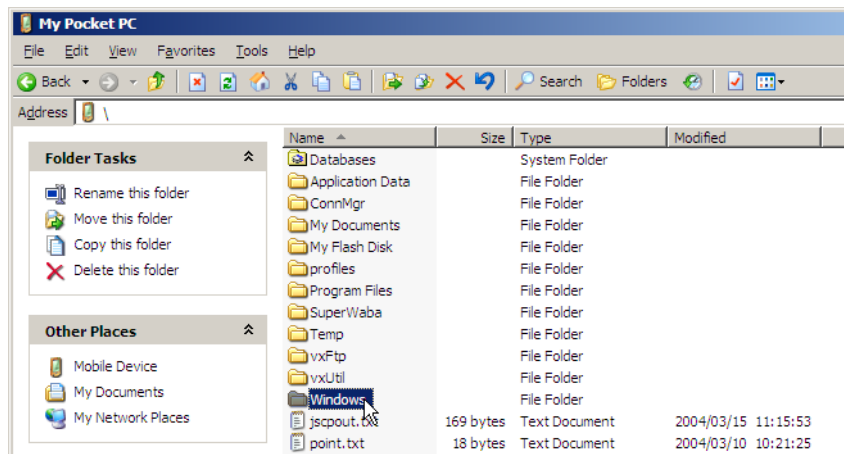
device cradle, or any other means, on the ActiveSync main window click **Explore**.



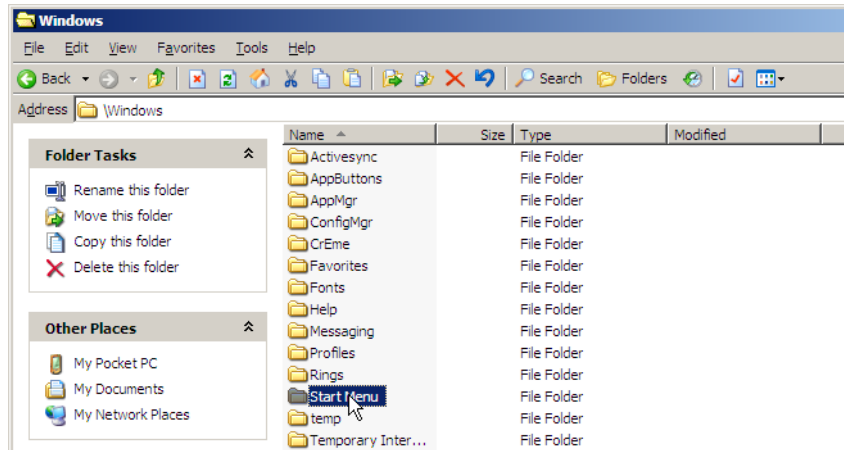
2.3.3 In the Explorer window that opens, click **My Pocket PC**.



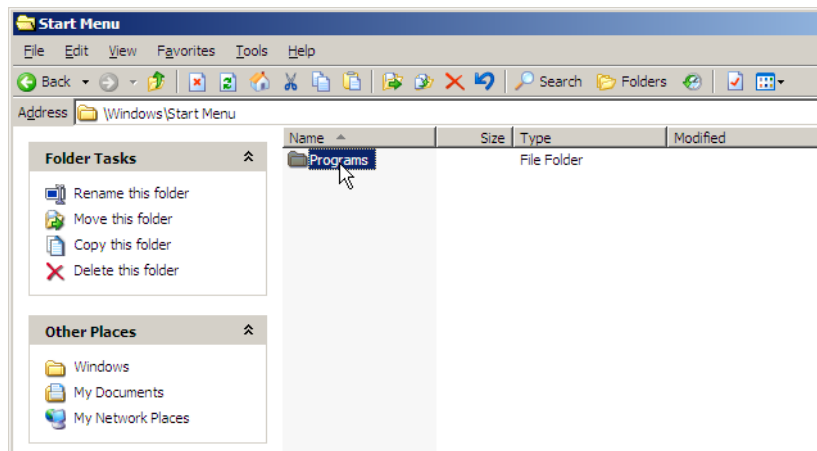
2.3.4 Click Windows.



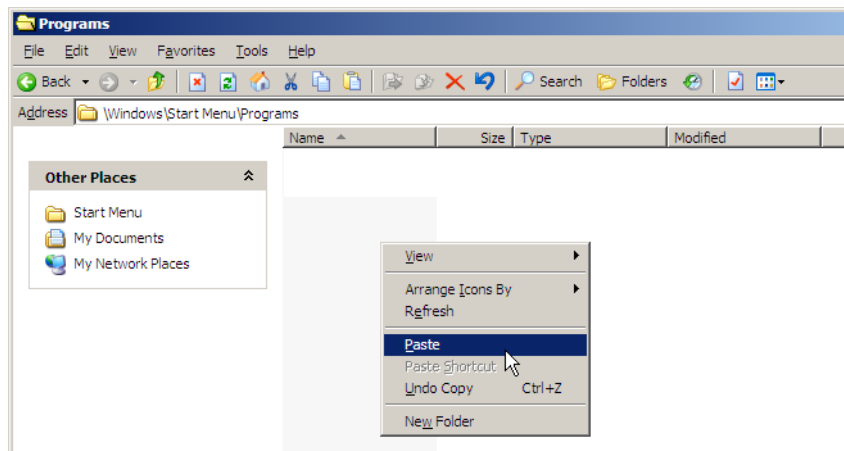
2.3.5 Click Start Menu.



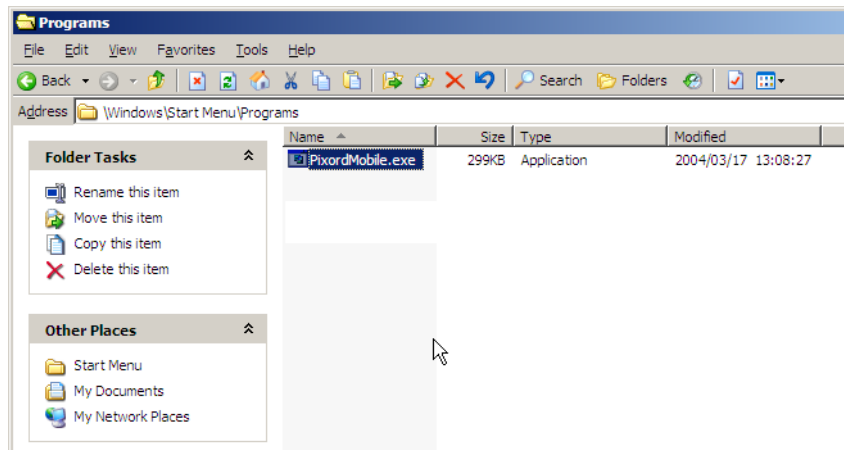
2.3.6 Click Programs.



2.3.7 Paste the file from the clipboard.



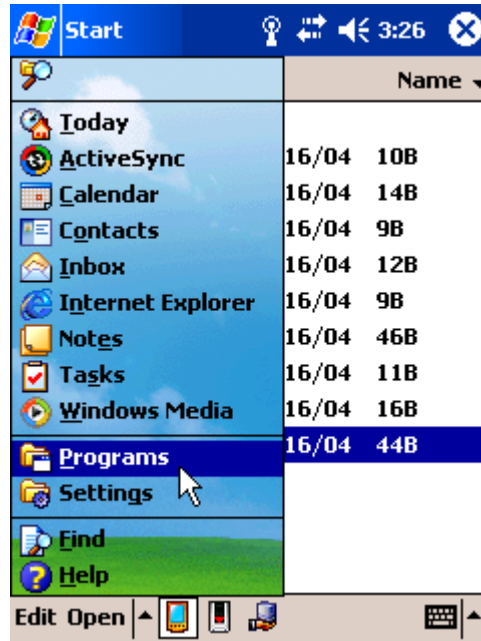
2.3.8 The PixordMobile application is now installed.



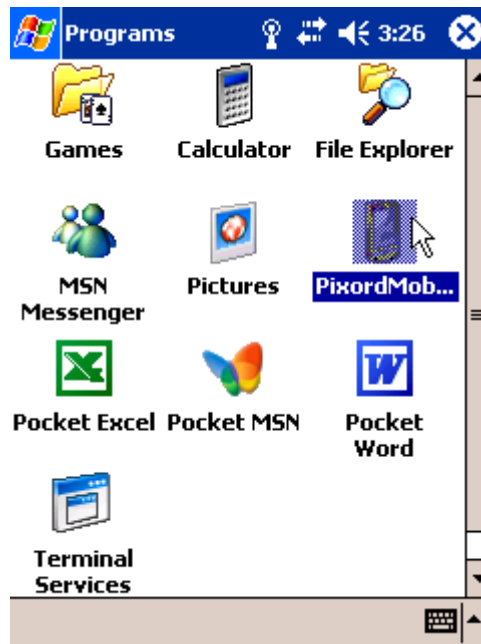
3 Configuration

3.1 Using PixordMobile

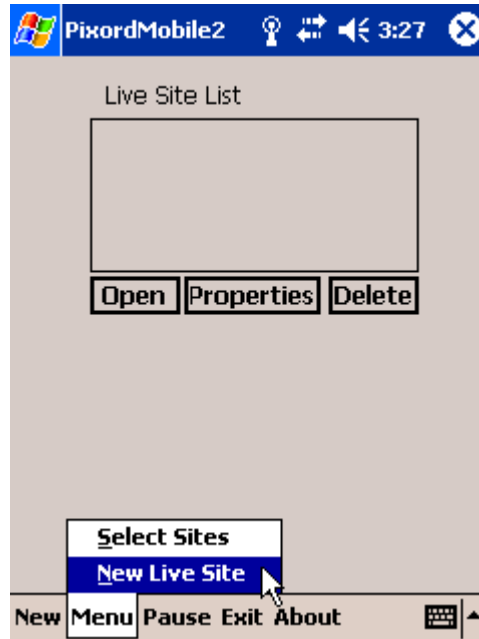
3.1.1 On the mobile device tap **Start > Programs**.



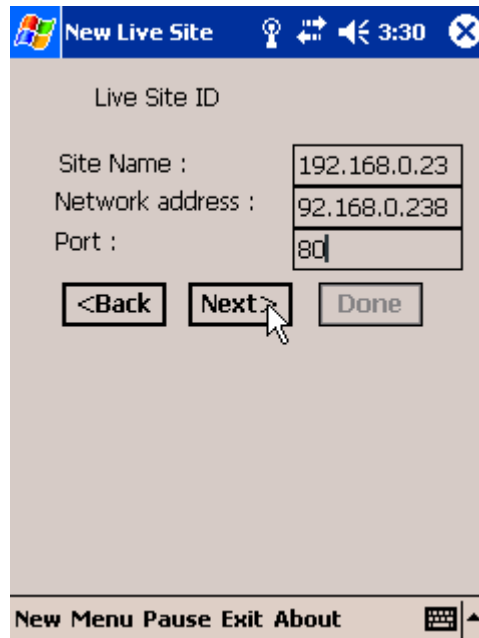
3.1.2 Tap **PixordMobile**.



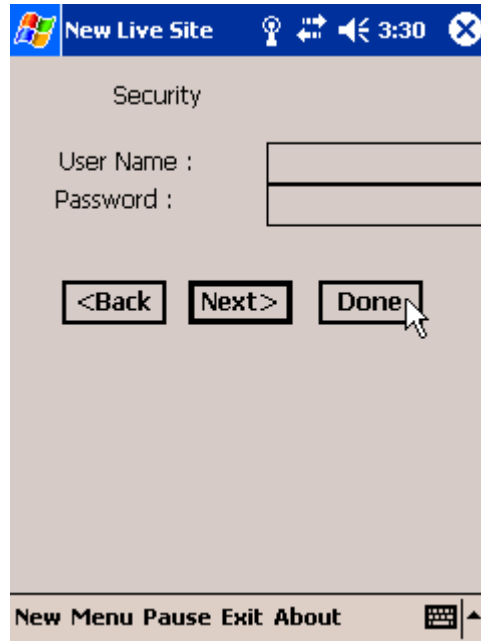
- 3.1.3 From the menu bar in the PixordMobile main window, select **Menu > New Live Site**.



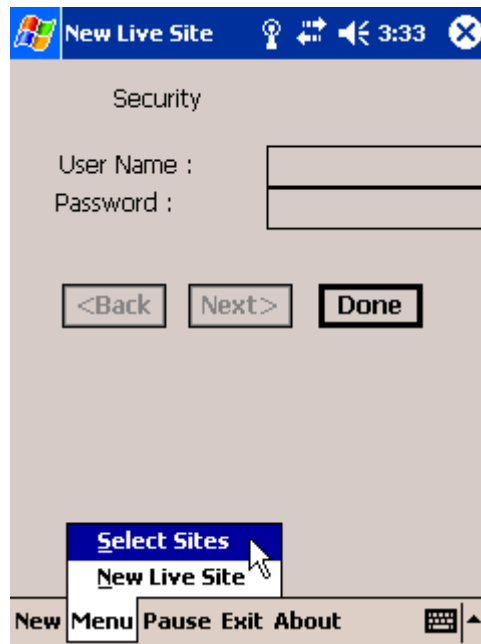
- 3.1.4 In the New Live Site dialog box, enter the requested information for the network camera or server that is to be connected, then tap **Next**.



3.1.5 Enter the User Name and Password for the network camera or server, then tap **Done**.



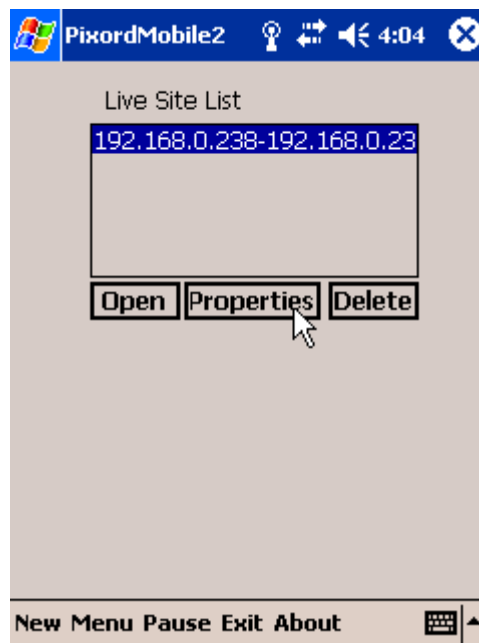
3.1.6 Tap Menu > Select Sites.



3.1.7 Select the appropriate site from the list.

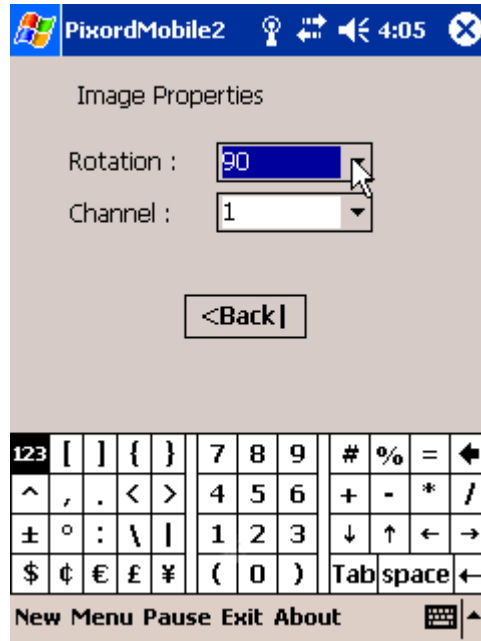


3.1.8 To configure the network server channel or to display the live video feed in landscape view tap **Properties**.

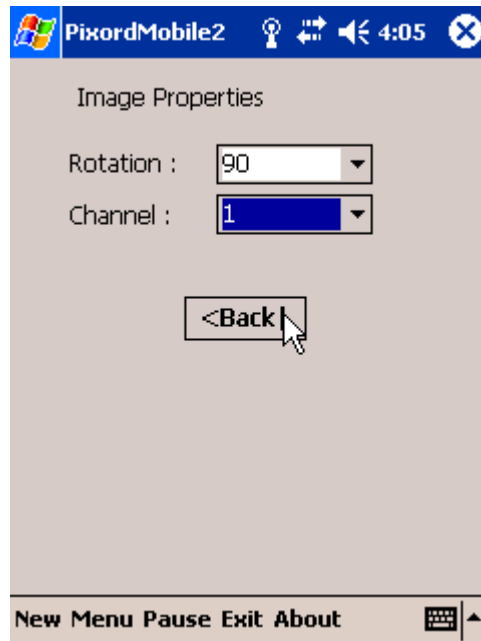


3.1.9 In the Properties dialog box, select **Rotation** then tap 9 to rotate the displayed video feed 90° (landscape view). The video feed can only be dis-

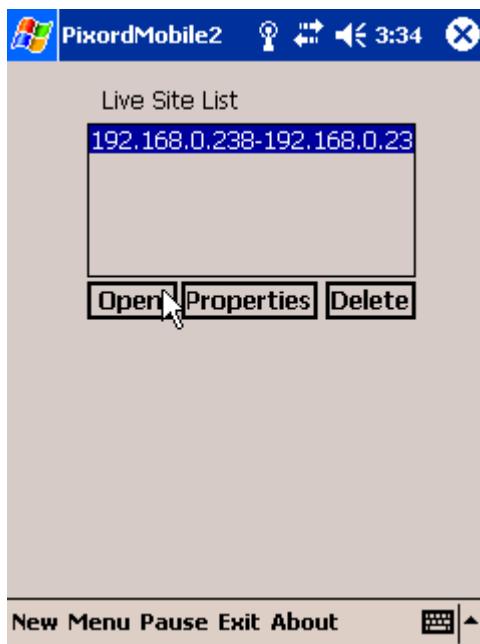
played in portrait or landscape views. To return to portrait view just tap any other number.



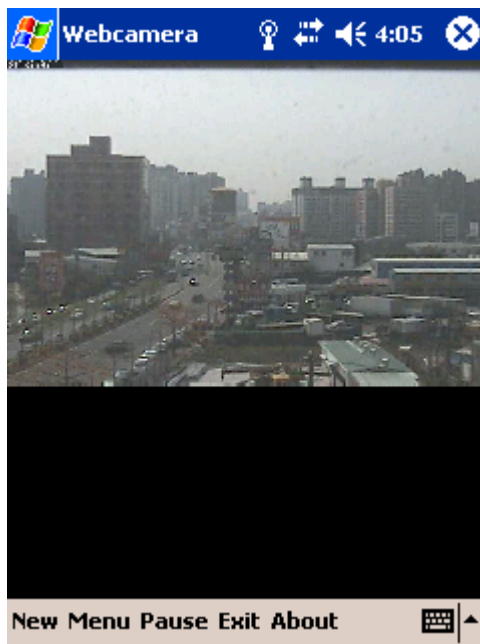
3.1.10 Select **Channel** then tap a number from 1-4 corresponding to the network server channel that is to be displayed. When finished tap **Back**.



3.1.11 To display a site select it from the list then tap **Open**.



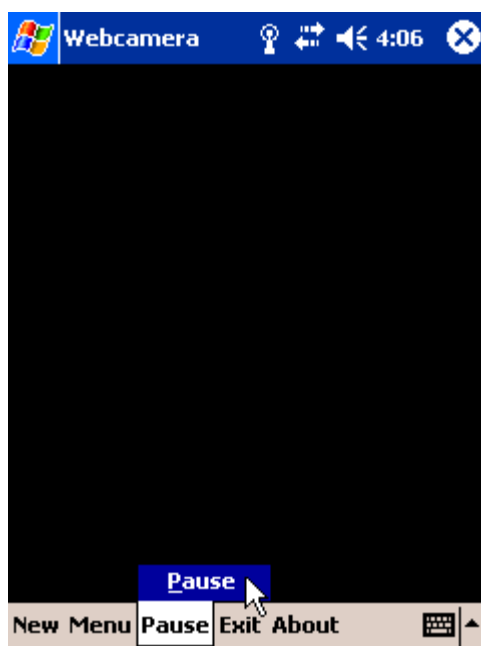
3.1.12 Portrait view.



3.1.13 Landscape view.



3.1.14 To return to the Sites list tap **Pause** > **Pause**.



3.1.15 To quit the program tap **Exit > Exit**.

