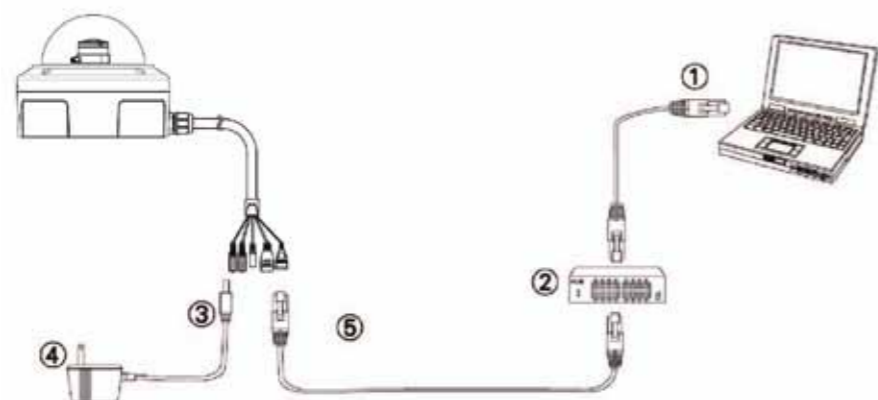


1. Hardware Connection



1. Prepare a PC with Ethernet link to the network.
2. Connect LAN port (RJ45) of the camera to a network switch/hub.
3. Connect power jack.
4. Ensure the power adaptor specification matches the power system (110V or 220V) and connect the adaptor to the outlet.
5. Check LED status (Power/Network).

2. Software Installation

The installation of the following software programs are required for the proper functioning of the device's Web user Interface. The programs are located in the Software Package CD provided together with the device.

- **IP Installer**
The IP Installer is used to locate and configure network cameras and video servers on the LAN. This utility is useful for conveniently configuring the network settings of the device, or for finding a device once the network settings have been modified. To install the IP Installer, from the Software Package CD, select IP installer, then follow the on instructions to complete the installation.
- **XVID Codec**
An H.264 codec is applied for displaying the video stream and playing the recorded AVI files. If the video stream can't be displayed or the recorded AVI files can't be play on PC, install this software from the Software Package CD.
- **VLC**
Though not necessary, this can be used for viewing the streaming without a Web browser.

3. Network Configuration

IP Installer is a utility that provides an easier, more efficient way to configure the IP address and network settings of the devices. It even provides a convenient way to set the network settings for multiple devices simultaneously using the batch setting function. Moreover, IP Installer can save the network settings for all devices as a backup and restore them when necessary.

- **Preparation before IP Assignment**
 1. Always consult your network administrator before assigning an IP address to your server in order to avoid using a previously assigned IP address.
 2. Ensure the PD637 is powered on and correctly connected to the network.
 3. MAC Address: Each device has a unique Ethernet address (MAC address) shown on the label of the device as the serial number (S/N) with 12 digits (e.g. 000429-XXXXXX).

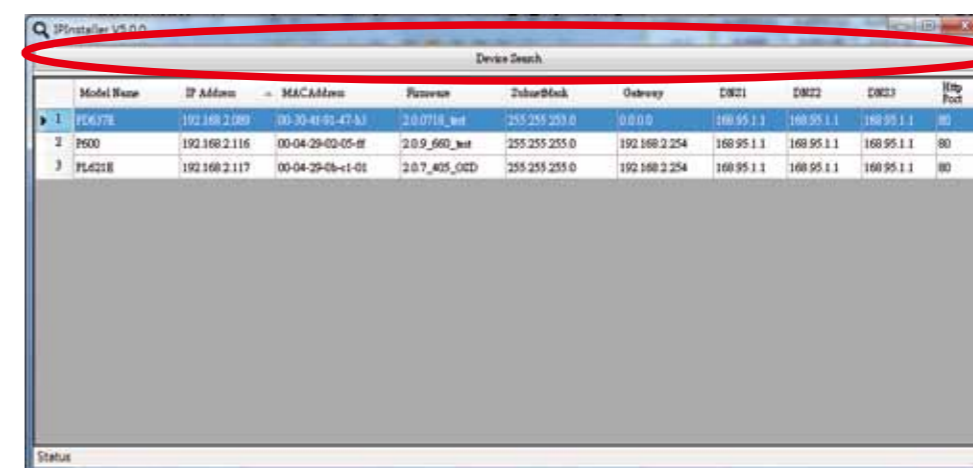


4. Although the IP Installer is able to find and configure any PD637 on the LAN except those that are behind a router, it is a good idea to set the host PC to the same subnet. In order to connect to the Web-based user interface of the camera, the host PC must be in the same subnet. For more information about subnets, please consult your network administrator.

- **Using IP Installer to Assign an IP Address to PD637**
 1. Once IP Installer has been successfully installed on the PC, double click to run the software.

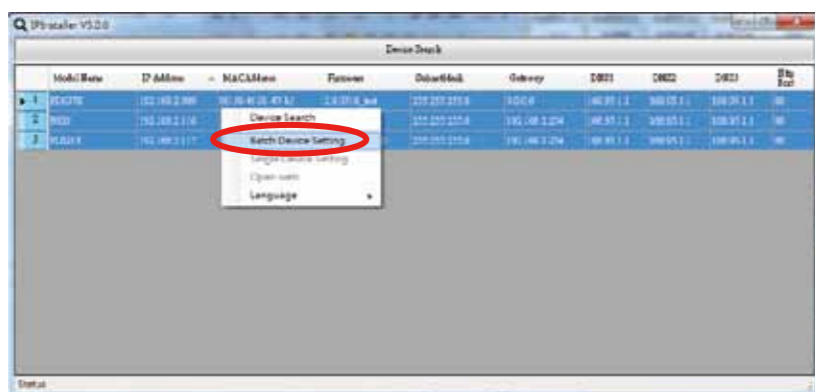


2. Click the [Device Search] to search the device in the LAN.

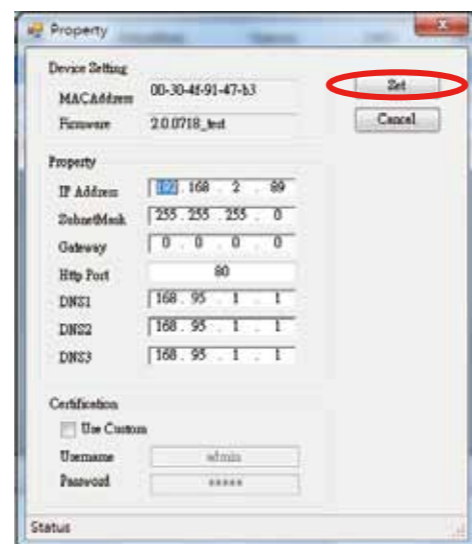
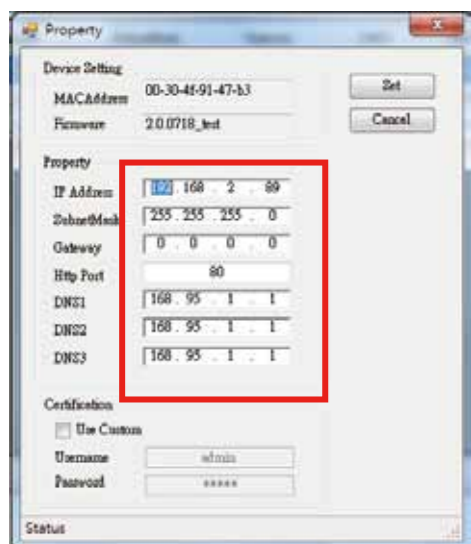


3. From the list, select the device with the MAC Address that corresponds to the PD637 that is to be configured. The MAC Address is identical to the unit's S/N (Serial Number).

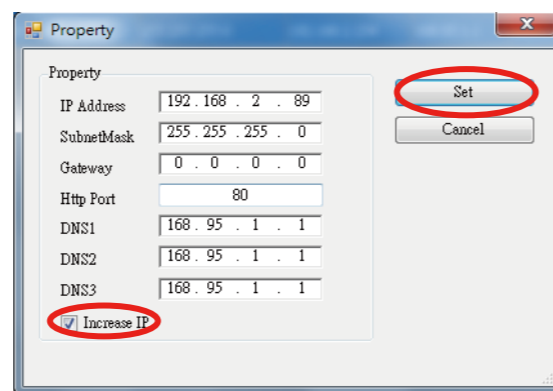
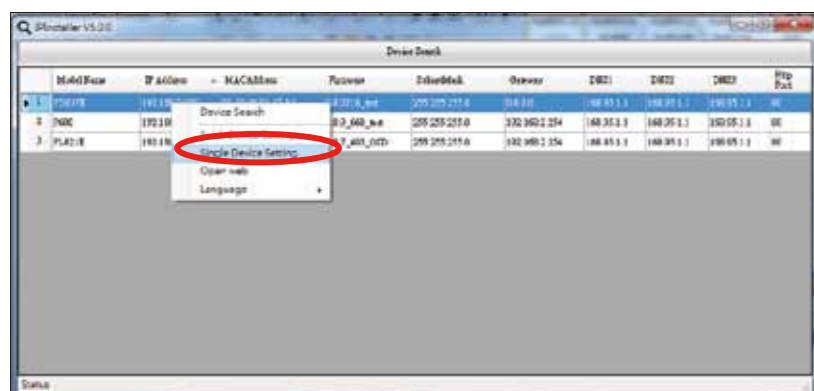
4. Double click the select item to open the Property Page or right click the item to select the [Single Device Setting].



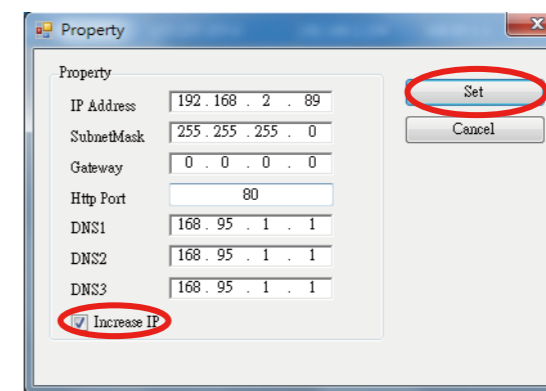
5. Modify the network settings of the camera. 6. After filling in the properties, click [Set] button to complete the configuration settings.



7. Click the [Batch Device Setting] to set several devices.

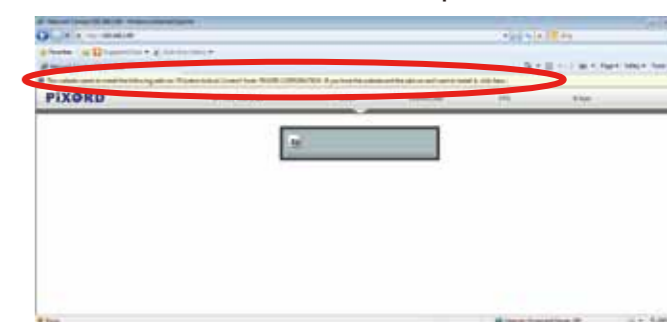
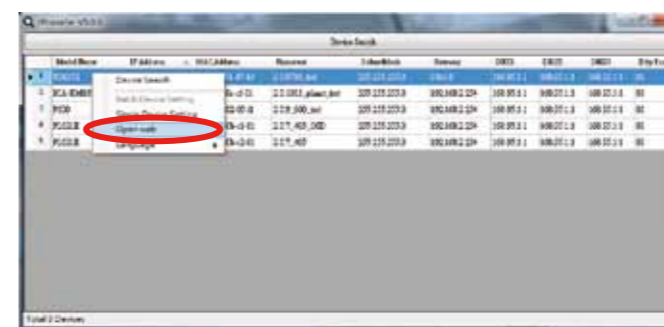


8. Language support for Chinese, English and Spanish.



● Open the Web-based UI of the selected camera
1. To access the Web-based UI of the selected unit, run the [Open Web] on the select item.

2. For first time user, there will be a prompt to install the ActiveX control. Confirm the installation as it is required to view the video stream and some operations.



3. If the device has been configured correctly, the default Web browser will open to the home page of the selected device.



* Username and password is required. (Default is admin / admin)

Verify and Complete the Installation from Your Browser
When browsing the Home Page at the first time with the Microsoft Internet Explorer TM, you must temporarily lower your security settings to perform a one-time-only installation of the ActiveX component onto your workstation, as described below:

1. From the Tools menu, select [Internet Options]
2. Click the [Security] tab and then click [Custom Level] button to see your current security settings.
3. Set the security level to Low and click [OK].
4. Type the URL or IP address of your camera into the Address field.
5. A dialog box will pop up asking if the ActiveX control should be installed. Click [Yes] to start the installation.

Once the ActiveX installation is complete, return the security settings to their original value, as noted above.