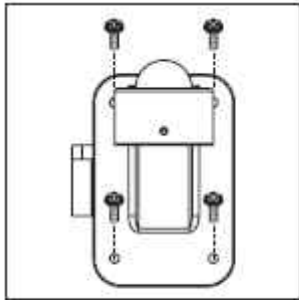


Pixord
MPEG-4 Network Dome Camera
P-465 Quick Guide

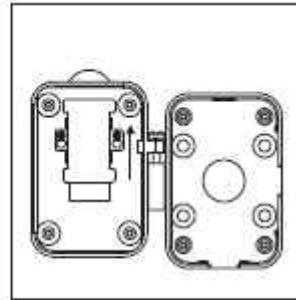
Date: 04/24/2008

1. Installation

Step 1 Separate bracket from base of bracket

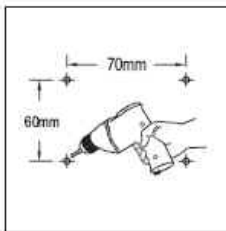


- Untighten four screws from bracket

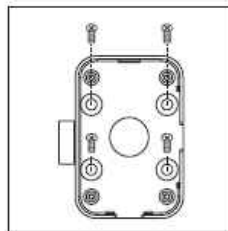


- Separate bracket and base of bracket from top of bolt.

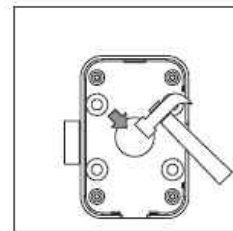
Step 2 Fix base of bracket on the wall



- Drill holes on desired location

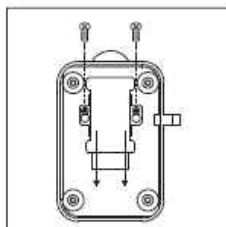


- Tighten four screws to fix the base of bracket (These four screws are not supplied. User must prepare their own screws)

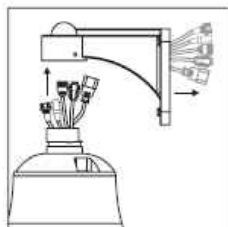


- If this circle hole is utilized, please use this tool to knock at this circle hole

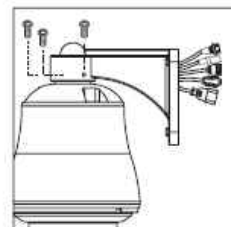
Step 3 Attach camera to bracket



- Untighten two screws from iron slice of fixed cable in the bracket and then pick off the iron slice.

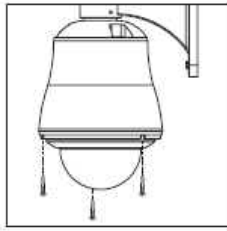


- Put output cables of outdoor fast dome camera in sequence through tube of bracket to outlet of bracket. (AC cable is preferred)

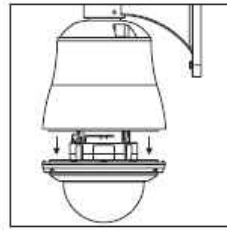


- Attach outdoor fast dome camera to bracket, and tighten three screws.

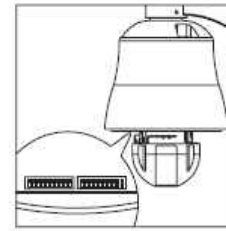
Step 4 Fast Dome Camera Setting



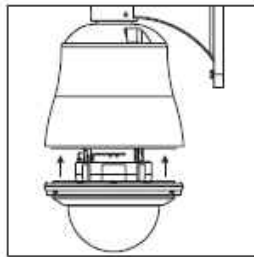
- Untighten three screws from dome cover



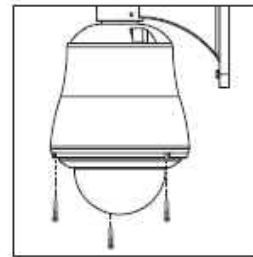
- Separate the dome cover from housing body



- Setup ID numbers of fast dome camera and RS-485 protocol.

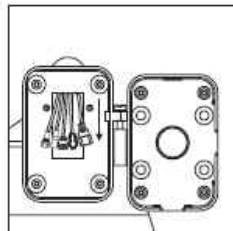


- Attach the dome cover to housing body

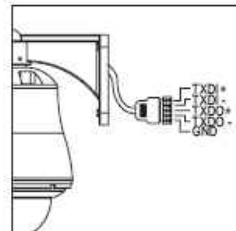


- Tighten three screws to fix the dome cover

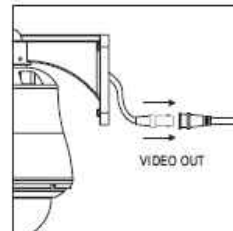
Step 5 Connect Jack



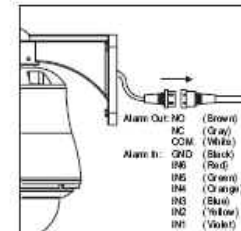
- Attach outdoor fast dome camera including bracket to base of bracket



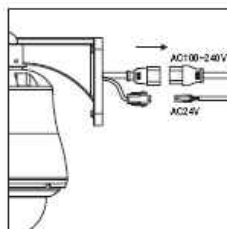
- Connect video cable



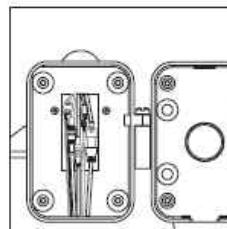
- Connect video cable



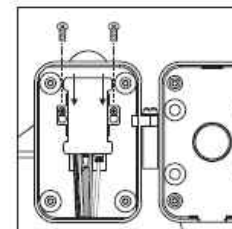
- Connect alarm out/input cable



- Connect AC24V or AC100~240V power cable

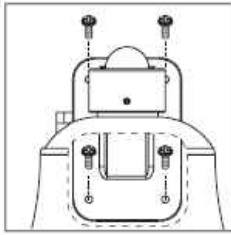


- After connecting all of cables, put all of cables and jacks in the tube of bracket

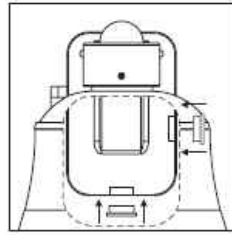


- Put iron slice of fixed cable on the bracket, and tighten two screws to fix the iron slice

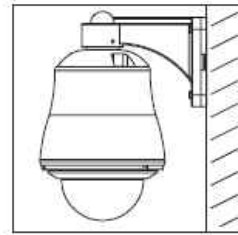
Step 6 Fix bracket and outdoor fast dome camera with base



● Tighten four screws to bracket



● Use rubber cover to chock outlet of un-use cable



● Complete outdoor fast dome camera installation

2. Software Installation

With the exception of the Macromedia Flash Player all the software that is necessary for the proper display and use of the device is available on the included CD or from the website. For the following installation procedures it is assumed that all installation media will be taken from the CD.

IP Installer

The IP Installer is used to locate and configure network cameras and video servers on the LAN. This utility is useful for conveniently configuring the network settings of the NDC, or for finding a device once the network settings have been modified.

To install the IP Installer, from the installation CD UI, select IP installer, then follow the on screen instructions.

Component Installer

This will install all ActiveX components used by our devices for video display and device configuration.

Adobe Flash Player

Please visit the Macromedia Web site at <http://www.adobe.com/downloads/> to download and install the Flash Player.

3. Network Configuration

IP Installer is a utility that provides an easier, more efficient way to configure the IP address and network settings of the camera. It even provides a convenient way to set the network settings for multiple devices simultaneously using the batch setting function. Moreover, IP Installer can save the network settings for all devices as a backup and restore them when necessary.

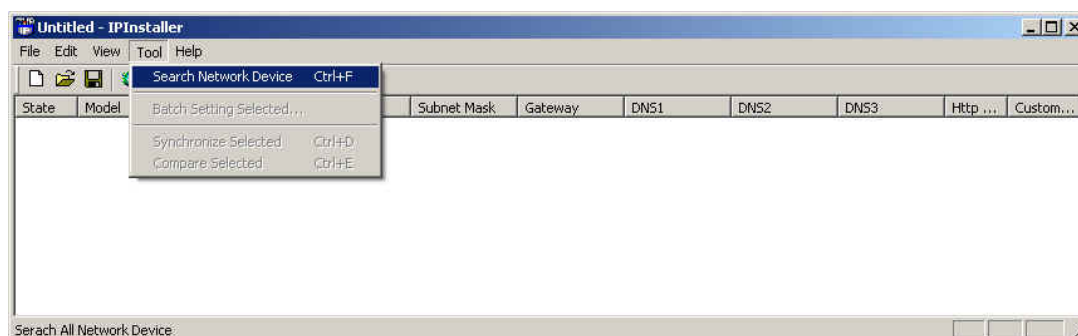
3.1 Preparation before IP Assignment

- ◆ Always consult your network administrator before assigning an IP address to your server in order to avoid using a previously assigned IP address.
- ◆ Ensure the camera is powered on and correctly connected to the network.
- ◆ MAC Address: Each camera has a unique Ethernet address (MAC address) shown on the bottom of the camera as the serial number (S/N) with 12 digits (e.g. 000429-XXXXXX).
- ◆ One final note, although the IP Installer is able to find and configure any NDC on the LAN except those that are behind a router, it is a good idea to set the host PC to the same subnet. In order to connect to the Web-based user interface of the NDC, the host PC must be in the same subnet. For more information about subnets, please consult your network administrator.

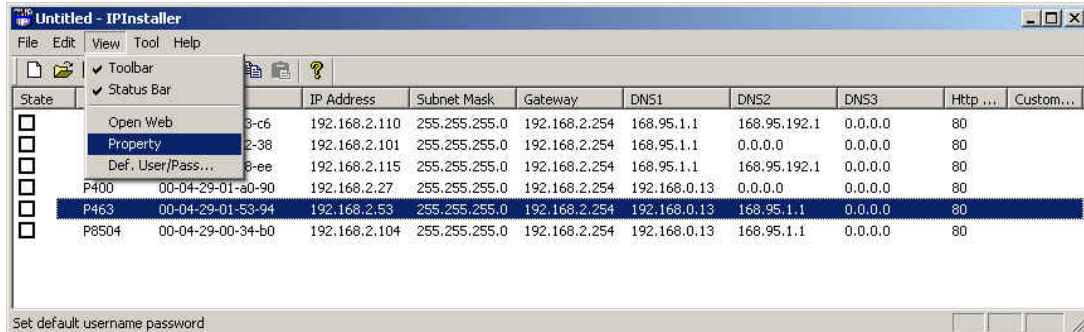


3.2 Using IP Installer

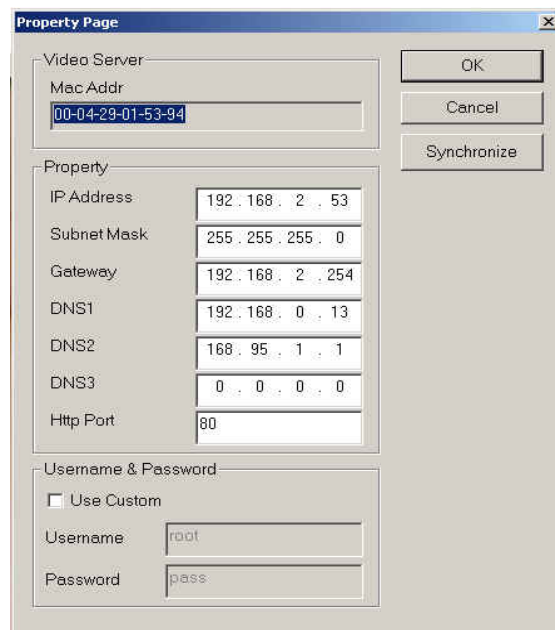
- ◆ Assigning IP address to Camera
- ◆ Once IP Installer has been successfully installed on the computer, double click the IP Installer icon on the desktop, or select it from Start > Programs > PiXORD Corporation > IP Installer > IP Installer.
- ◆ The IP Installer window is displayed below.
- ◆ Click the menu bar Tool > Search Network Device to search the camera in the LAN.



- ◆ From the list, select the device with the MAC Address that corresponds to the device that is to be configured. The MAC Address is identical to the unit's S/N (Serial Number).
- ◆ Double click the item to open the Property Page dialog box for the selected device or click the menu bar View > Property.



- ◆ After filling in the properties, click [Synchronize] button to complete the configuration settings in the remote camera while saving configuration in the PC.
- ◆ If click [OK] button, the configuration is only saved in the PC.



- ◆ Open the Web-based UI of the Selected camera
- ◆ To access the Web-based UI of the selected unit, run the View > Open Web on IP installer menu bar.
- ◆ If the device has been configured correctly, the default Web browser will open to the home page of the selected device.
- ◆ If you find your browser is opened and automatically connected to the camera Home Page, it means you have assigned an IP address to the unit successfully. Now you can close the IP Installer and start using your camera.
- ◆



◆ Verify and Complete the Installation from Your Browser

Start your browser and enter the IP Address of your NDC in the Address field.

The camera can support Microsoft Internet Explorer™ and Netscape™. But the voice feature can only be run under Microsoft Internet Explorer™.

When browsing the Home Page at the first time with the Microsoft Internet Explorer™, you must temporarily lower your security settings to perform a one-time-only installation of the ActiveX component onto your workstation, as described below.

1. From the Tools menu, select [Internet Options]
2. Click the [Security] tab and then click [Custom Level] button to see your current security settings.
3. Set the security level to Low and click [OK].
4. Type the URL or IP address of your camera into the Address field.
5. A dialog box will pop up asking if the ActiveX control should be installed. Click [Yes] to start the installation.
6. Once the ActiveX installation is complete, return the security settings to their original value, as noted above.