

PIXORD

**Dual Streaming Network Camera /
Video Server**

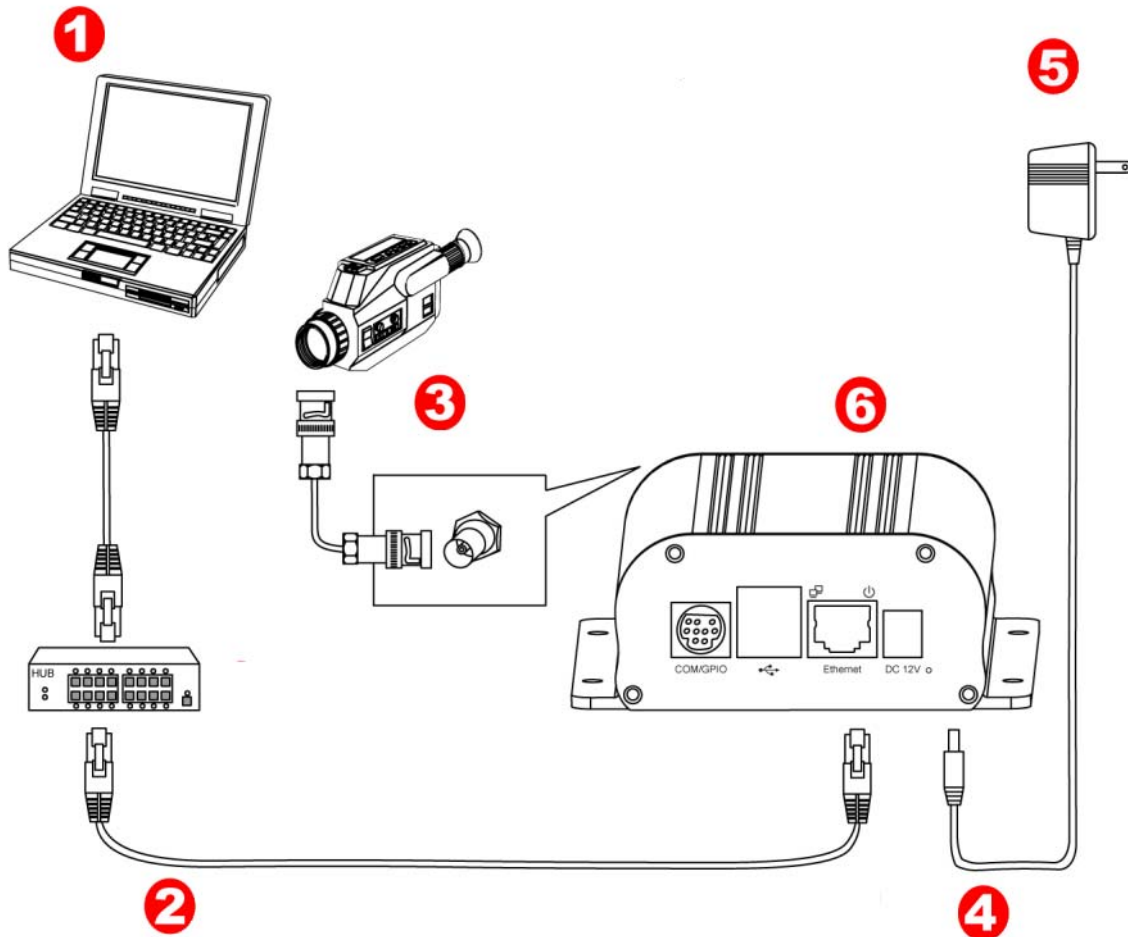
P-500/1500

Quick Installation Guide

Version: 1.0

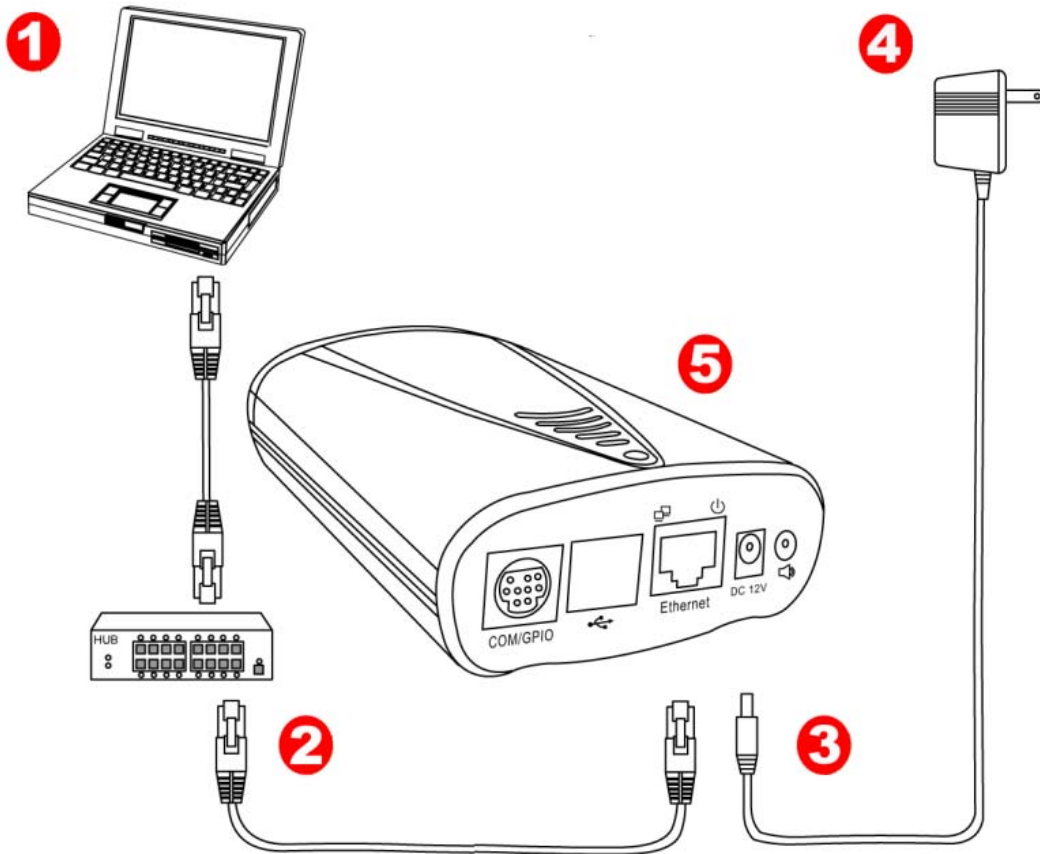
Date: 01/02/2008

1. Physical Connections



1. Prepare a PC with Ethernet link to the network
2. Connect P1500 device to the network hub/switch with standard pass through (CAT5) cable, or connect directly to PC with a cross over cable.
3. Connect the video output of a CCD camera using standard 75 Ω coaxial cable terminated with BNC connector.
4. Connect power jack
5. Ensure the power adapter specification matches the power system (110V or 220V). Connect the adapter to the outlet.
6. Check both LEDs (Power/Network); ensure they are light on after the step above.

Follow the same steps as connecting P1500 video server except the step 3, to perform the P500 connections.



2. Set network IP address

Before using P500/1500, the IP address must be set in advance.

NOTE:

- Make sure the P500/1500 is powered on and connected to the network correctly.
- Obtain a unique IP address from your network administrator.

The setting below will be used for the following examples.

| PC Network Setting | |
|---------------------------|---------------|
| IP address | 192.168.2.10 |
| Subnet Mask | 255.255.255.0 |
| Gateway | 192.168.2.254 |
| P500/1500 Network Setting | |
| IP Address | 192.168.2.57 |
| Subnet Mask | 255.255.255.0 |
| Gateway | 192.168.2.254 |

Important! The following examples using above settings are just for demonstration. Always consult your network administrator to get your own network setting.

- MAC Address: Each P500/1500 has a unique Ethernet address (MAC address) shown at the bottom of the NC as the serial number (S/N) with 12 digits (e.g. 000429-XXXXb2)

The IP address assigned to P500/1500 shall be the same IP domain (present as same subnet mask) with PC IP address. In our case, PC IP address is 192.168.2.10, and P500/1500 is 192.168.2.37, so the subnet mask shall be 255.255.255.0. If PC subnet mask is 255.255.255.128 or higher, then the domain range can't cover 192.168.2.57, so the setting won't take effective.

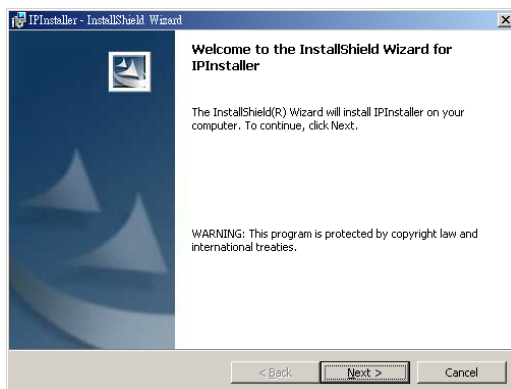
Install IP Installer

1. Find IP Installer program in the product CD pack.
2. launch setup.exe

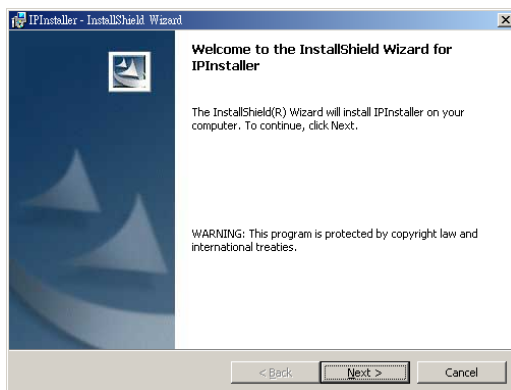
- ◆ Click “Next” button



- ◆ Click “Next” button



- ◆ Click “Finish” button to finish the installation



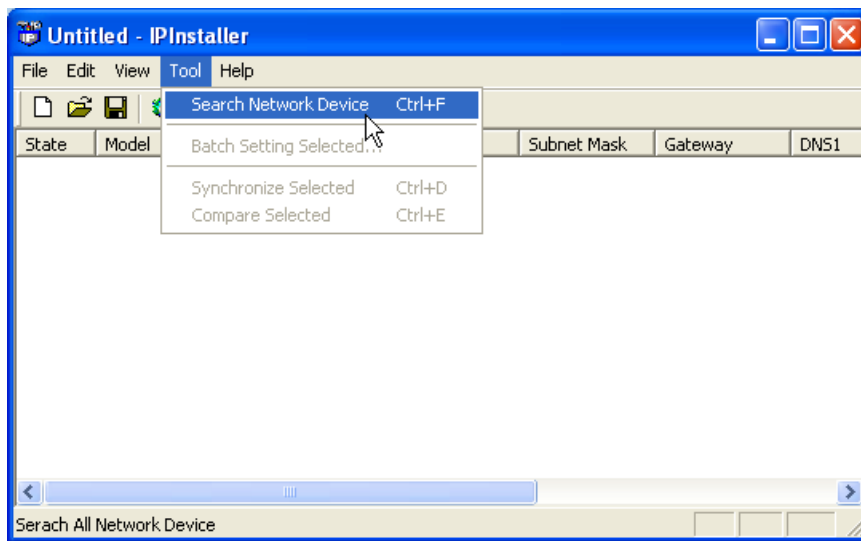
Using IP Installer to Assign an IP Address to P500/1500

1. Once IP Installer has been successfully installed on the PC, double click the IP Installer icon on the desktop, or select it from Start > Programs > IP Installer > IP Installer > Launch IP Installer.

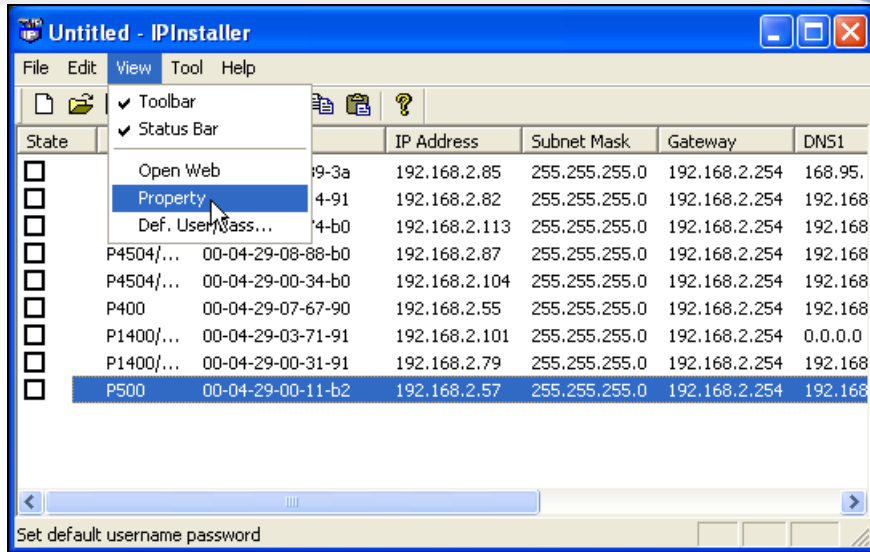


IPInstaller.exe

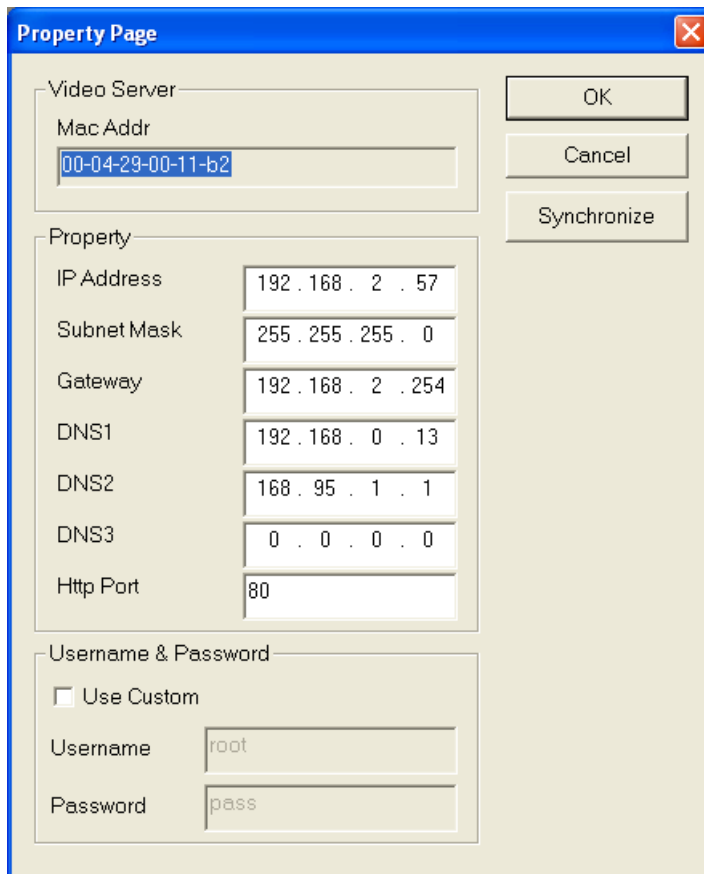
2. Click on the menu bar Tool > Search Network Device to search the device in the LAN.



3. From the list, select the device with the MAC Address that corresponds to the P500/1500 that is to be configured. The MAC Address is identical to the unit's S/N (Serial Number).
4. Double click on the item to open the Property Page for the selected device or click on the menu bar View > Property.



- After filling in the properties, click [Synchronize] button to complete the configuration settings in the remote P500/1500 while saving configuration in the PC. If click [OK] button, the configuration is only be saved in the PC.



Open the Web-based UI of the Selected P500/1500

1. To access the Web-based UI of the selected unit, run the View > Open Web on the menu bar, or directly type in the assigned IP in the address field of IE browser.
2. There will be a prompt to install the ActiveX control. Confirm the installation as it is required to view the video stream and some operation.
3. The Web UI with live video will then show like below figure

