

PIXORD 262

User's Manual

Version:1.0

Date:06/23/06

Catalog

1 INTRODUCTION	3
2 INSTALLATION	4
2.1 System Requirements.....	4
2.2 Network Camera Installation	4
2.3 Assign IP using IP Installer	5
2.3.1 Executing IP Installer.....	5
2.3.2 Verify the IP Address and Open the Home Page.....	7
2.3.3 Verify and Complete the Installation From Your Browser.....	8
3 PIXORD NC Home Page.....	9
3.1 SYSTEM CONFIGURATION	11
3.1.1 General Server Settings.....	11
3.1.2 Clock Settings	12
3.1.3 Time Stamp	13
3.1.4 Network.....	14
3.1.5 Serial Port Management.....	16
3.1.6 Video Adjustment.....	17
3.2 Advanced Configuration	18
3.2.1 System commands	18
3.2.2 User Settings	19
3.2.3 Pixord DDNS Settings	21
3.2.4 Event Script Edit	24
3.2.5 SMTP	26
3.2.6 DHCP Settings	27
3.2.7 PTZ	28
3.2.8 Motion Area Selection	33
3.2.9 Recording Settings	34

1 INTRODUCTION

What is the PIXORD Network Dome Camera?

PIXORD Network Dome Camera (NDC) is an Internet-based digital surveillance system with a built-in Web server. It runs on TCP/IP to distribute the compressed live video into Intranet/Internet through the Ethernet connection.

You can easily manipulate and configure the PIXORD NDC with the Web-based control over the Internet via standard browsers such as Internet Explorer™

The PIXORD NDC contains an image compression chipset, capable of delivering standard JPEG, MJPEG, and real-time video, in order to distribute monitored images into the limited network bandwidth.

Advanced Features

Self-Contained HTTP Web Server, providing Internet capability

IP assignment via Pixord IP Installer Software

IP additional assignment feature via ARP

Active-X control for Internet Explorer™ providing maximum performance

Customized Event Triggering by Motion Detection / Date / Time / GPIO Input

Email / FTP / Internal Buffer Storage / Relay Out for event action

Programmable event script for various applications

PIXORD DDNS support for dynamic IP application

3-Layer User Security Control

Remote Upgradeable firmware and user content pages via FTP.

Green power, fan needless, and hardware watchdog providing robustness system in critical environment

2 INSTALLATION

2.1 System Requirements

- 1.Windows 2000 SP4/Windows XP/Windows 98se/Windows ME
Internet Explorer 6.0 DirectX 9.0c
- 2.Ensure that your system has installed the latest Critical Updates from Windows Update.
- 3.Ensure that your Internet Explorer Security settings have been set to Low (temporarily) or at least enable ActiveX control settings.
- 4.If your system is using Symantec Internet Security Professional, ensure that it is disabled.
- 5.Temporarily disable any Anti-Virus software that may be installed.
- 6.Ensure that your system has installed the soundboard and VGA drivers.

Is it necessary to reboot the PC after upgrading the ActiveX control?

If you have been browsing a device that is using an old ActiveX control then switch to a device with a new ActiveX control in the same browser session, after installing the new ActiveX control you will be prompted to reboot your computer before the changes will take effect. In fact, you only need to close all instances of Internet Explorer, then open a new instance and browse to the device with the new ActiveX control. This time, after installing the ActiveX control, you will not be prompted to reboot your computer.

2.2 Network Camera Installation

Ensure the PIXORD Network Camera is in power-off state.

Ethernet cable: Connect PIXORD NC to your network using twisted pair (CAT5) terminated with a standard RJ-45 connector.

If it is connected to a hub/switch, use a pass-through cable. If it is connected directly to a PC, use crossover cable.

Ensure you power supply adapter specification (Input AC 110V or 220V, Output DC 12V 1A) matches to your power line, and connect the power supply to the Network Video Server.

Check the power LED (red) is constant lit, and the network LED (display link status) should light up (red) less than 10 seconds if your network connection is correct.

2.3 Assign IP using IP Installer

PIXORD IP Installer is the software that provides an easier way for setting the IP address and network configurations of the PIXORD's Network Camera. Using this tool, you can easily set multiple PIXORD NCs at the same time with the batch setting function. By utilizing IP Installer, the setting process is largely simplified and the setting time is effectively shortened. Moreover, IP installer can not only save all the configurations of PIXORD NC as a backup, but also it can restore the previous configurations of PIXORD NC.

Preparation before IP Assignment:

Always consult your network administrator before assigning an IP address to your server.

Make sure the PIXORD NC is powered on and correctly connected to the network.

Obtain an IP address not yet used from your network administrator.

MAC Address: Each PIXORD NC has a unique Ethernet address (MAC address) shown on the bottom of the PIXORD NC as the serial number (S/N) with 12 digits (e.g. 000429-XXXXXX) .



2.3.1 Executing IP Installer

Double click the mouse left button on the IP Installer icon.



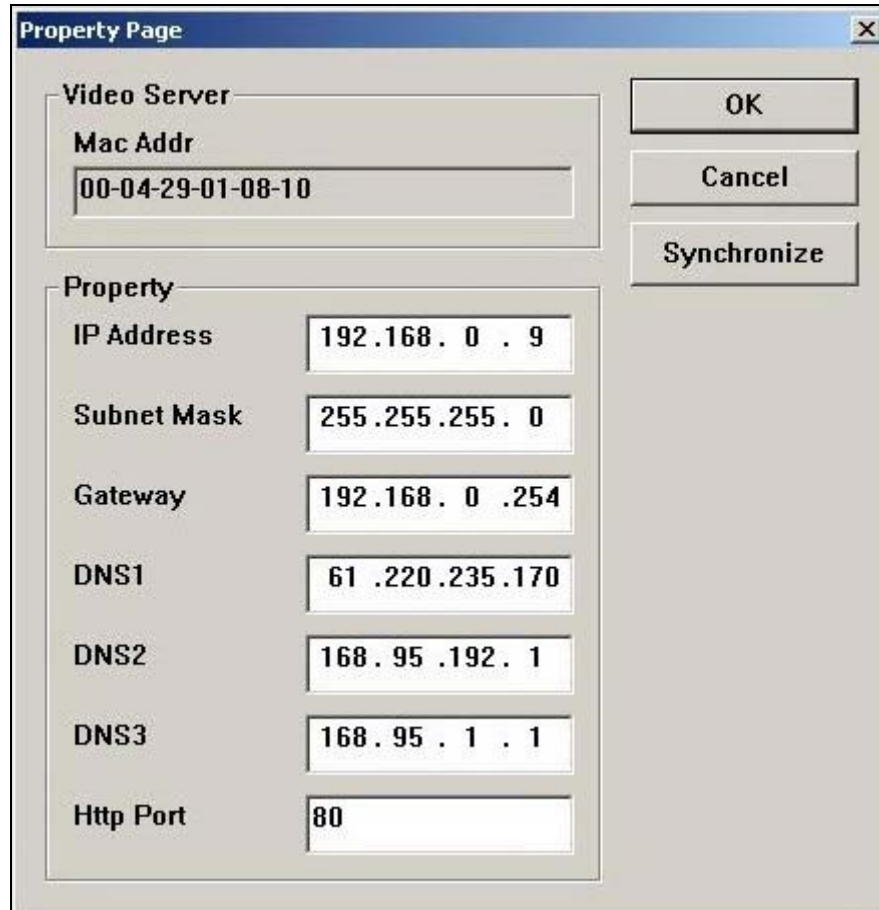
The PiXORD IP Installer form is displayed on the screen.

State	Model	Mac Add...	IP Address	Subnet ...	Gateway	DNS1	DNS2	DNS3	Http ...
<input type="checkbox"/>	P4000	00-04-2...	192.168...	255.25...	192.168.0.225	168.95.1.1	61.220...	168.95.192.1	9999
<input type="checkbox"/>	P4000	00-04-2...	192.168...	255.25...	192.168.0.254	168.95.1.1	0.0.0.0	0.0.0.0	80
<input type="checkbox"/>	P4000	00-04-2...	192.168...	255.25...	0.0.0.0	168.95.192.1	168.95.1.1	0.0.0.0	80
<input type="checkbox"/>	P4000	00-04-2...	192.168...	255.25...	192.168.0.254	0.0.0.0	0.0.0.0	0.0.0.0	80
<input type="checkbox"/>	P261	00-04-2...	192.168...	255.25...	0.0.0.0	0.0.0.0	0.0.0.0	0.0.0.0	80
<input type="checkbox"/>	P10	00-04-2...	192.168...	255.25...	192.168.0.254	168.95.1.1	0.0.0.0	0.0.0.0	9003
<input type="checkbox"/>	P261	00-04-2...	192.168...	255.25...	0.0.0.0	0.0.0.0	0.0.0.0	0.0.0.0	80
<input type="checkbox"/>	P120/P...	00-04-2...	192.168...	255.25...	192.168.0.225	168.95.1.1	61.220...	168.95.192.1	9998
<input type="checkbox"/>	P200/P...	00-04-2...	192.168...	255.25...	192.168.0.254	168.95.1.1	168.95...	0.0.0.0	80
<input type="checkbox"/>	IVS1200	00-04-2...	192.168...	255.25...	192.168.0.254	168.95.1.1	0.0.0.0	0.0.0.0	80
<input type="checkbox"/>	P4000	00-04-2...	192.168...	255.25...	192.168.0.254	168.95.1.1	0.0.0.0	0.0.0.0	8000
<input type="checkbox"/>	P241	00-04-2...	192.168...	255.25...	192.168.0.254	61.220.235...	168.95...	168.95.1.1	8000

Assign an IP Address to PiXORD Network Camera

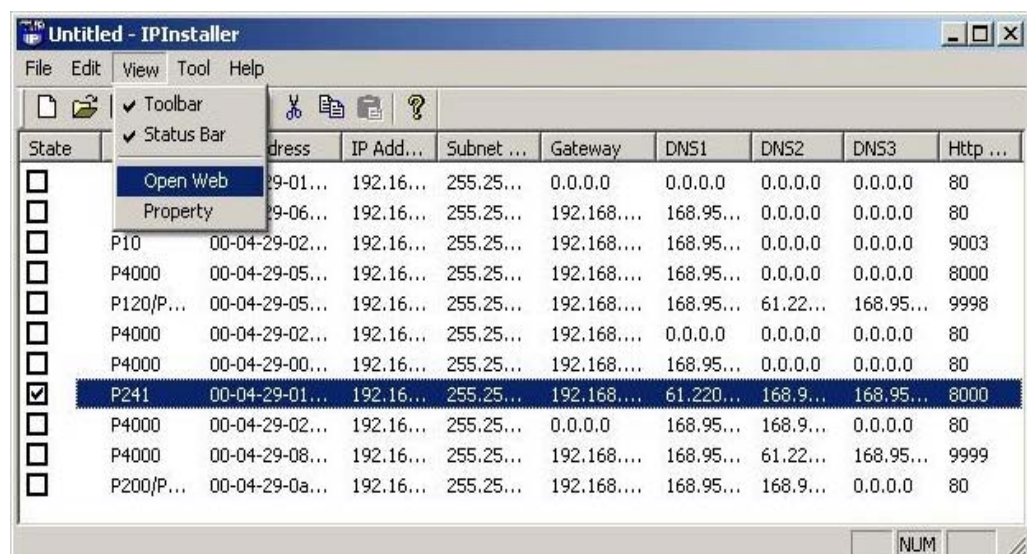
State	Model	Mac Add...	IP Address	Subnet ...	Gateway	DNS1	DNS2	DNS3	Http ...
<input type="checkbox"/>	P10	00-04-29-01...	192.16...	255.25...	0.0.0.0	0.0.0.0	0.0.0.0	0.0.0.0	80
<input type="checkbox"/>	P10	00-04-29-02...	192.16...	255.25...	192.168...	168.95...	0.0.0.0	0.0.0.0	80
<input type="checkbox"/>	P4000	00-04-29-05...	192.16...	255.25...	192.168...	168.95...	0.0.0.0	0.0.0.0	8000
<input type="checkbox"/>	P120/P...	00-04-29-05...	192.16...	255.25...	192.168...	168.95...	61.22...	168.95...	9998
<input type="checkbox"/>	P4000	00-04-29-02...	192.16...	255.25...	192.168...	0.0.0.0	0.0.0.0	0.0.0.0	80
<input type="checkbox"/>	P4000	00-04-29-00...	192.16...	255.25...	192.168...	168.95...	0.0.0.0	0.0.0.0	80
<input checked="" type="checkbox"/>	P241	00-04-29-01...	192.16...	255.25...	192.168...	61.220...	168.9...	168.95...	8000
<input type="checkbox"/>	P4000	00-04-29-02...	192.16...	255.25...	0.0.0.0	168.95...	168.9...	0.0.0.0	80
<input type="checkbox"/>	P4000	00-04-29-08...	192.16...	255.25...	192.168...	168.95...	61.22...	168.95...	9999
<input type="checkbox"/>	P200/P...	00-04-29-0a...	192.16...	255.25...	192.168...	168.95...	168.9...	0.0.0.0	80

Select the MAC Address of your PiXORD NC in the list. The MAC Address is identical to the unit's S/N (Serial Number). And click the menu bar View/Property to open the Property Page for the selected item. After filling in the properties, click on Synchronize first in order to save the Properties, then click the OK button to submit the settings for the unit and the settings will be activated immediately.



2.3.2 Verify the IP Address and Open the Home Page.

To access the Home Page of the selected unit, run the View/Open Web on the menu bar. If you find your browser is opened and automatically connected to the PIXORD NC Home Page, it means you've assigned an IP Address to the unit successfully. Now you can close the IP Installer and start to use your PIXORD NC.



2.3.3 Verify and Complete the Installation From Your Browser

Start your browser and enter the IP Address of your PIXORD NC in the Address field.



The PIXORD NC supports Microsoft Internet Explorer.

When the Web-based user interface runs for the first time through Internet Explorer, you must temporarily lower your security settings to perform a one-time-only installation of PIXORD's ActiveX component onto your workstation.

The procedure is the following:

From the Tools menu, select Internet Options

Click the Security tab and take note of your current security settings

Set the security level to Low and click OK

Type the Internet Address or Host Name of your PIXORD NC into the Address field

A windows-dialog asking if you want to install wcp10.cab will appear. Click yes to start the installation

Once the ActiveX installation is complete, return the security settings to their original value, as noted above

To continue the configuration of your own application, click the configure button in the top left corner of this window.

3 PIXORD NC Home Page

Browsing Web User Interface

Start your Web browser and enter the URL (e.g., “http://61.220.235.172”) in the Address field. The Home page of the PIXORD NC is now displayed:

The Web User Interface is organized in two sections, the Basic settings and the Advanced settings,



➤ **1. Language:**

Please select the language in which the Web User Interface will be displayed. Current selectable languages are: English, Traditional and Simplified Chinese.

➤ **2. Video Source:**

Please select the Digital Zoom for the image displayed:

- ◆ **X1: Applicable for Full Resolution Size**
- ◆ **X2: Applicable for SIF**
- ◆ **X4: Applicable for QSIF and SIF**

➤ **3. Snapshot:**

Click on the icon to take a snapshot of the current live view

➤ **4. Configuration:**

Click on the button to configure the device

➤ **5. Manual Operation (Pan / Tilt Control)**

To control the pan and tilt movement of the dome simply use the PT direction controller by clicking on the buttons; to pan or tilt, just click on the buttons for the desired direction. To adjust the speed just click on the Speed buttons for the desired speed.

The higher the number clicked, the faster the speed.

UP: Click on the button to tilt up.

DOWN: Click on the button to tilt down.

LEFT: Click on the button to pan left.

RIGHT: Click on the button to pan right.

DIAGONAL: Click on the diagonal buttons to control the diagonal position.

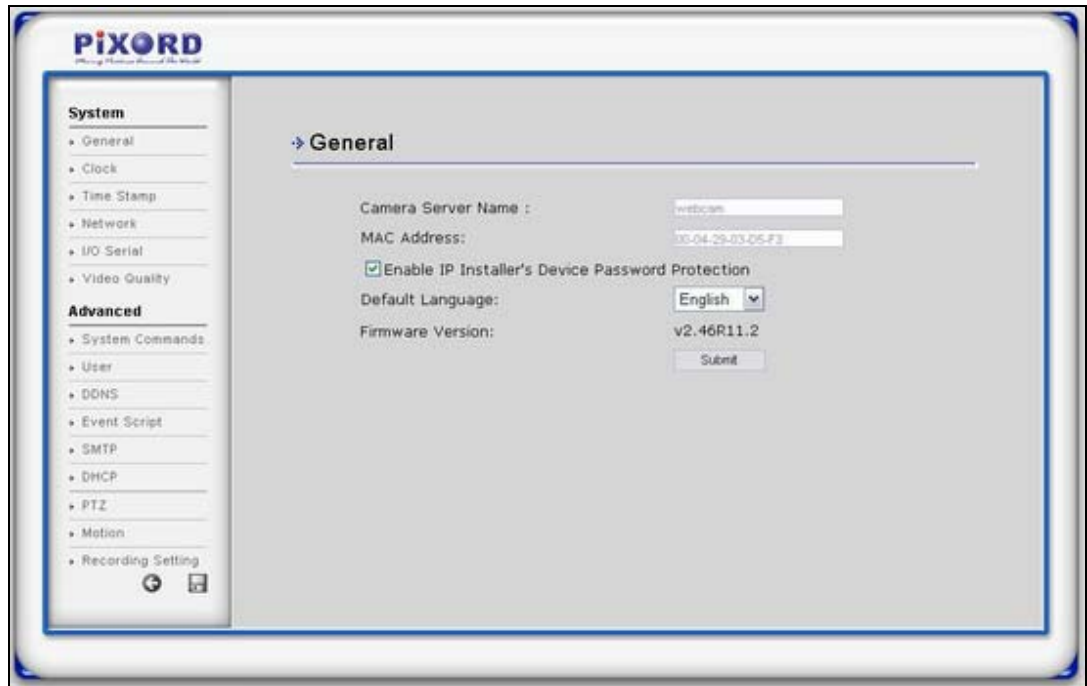
6. Full Screen

7. Rotation

8. Live Recording

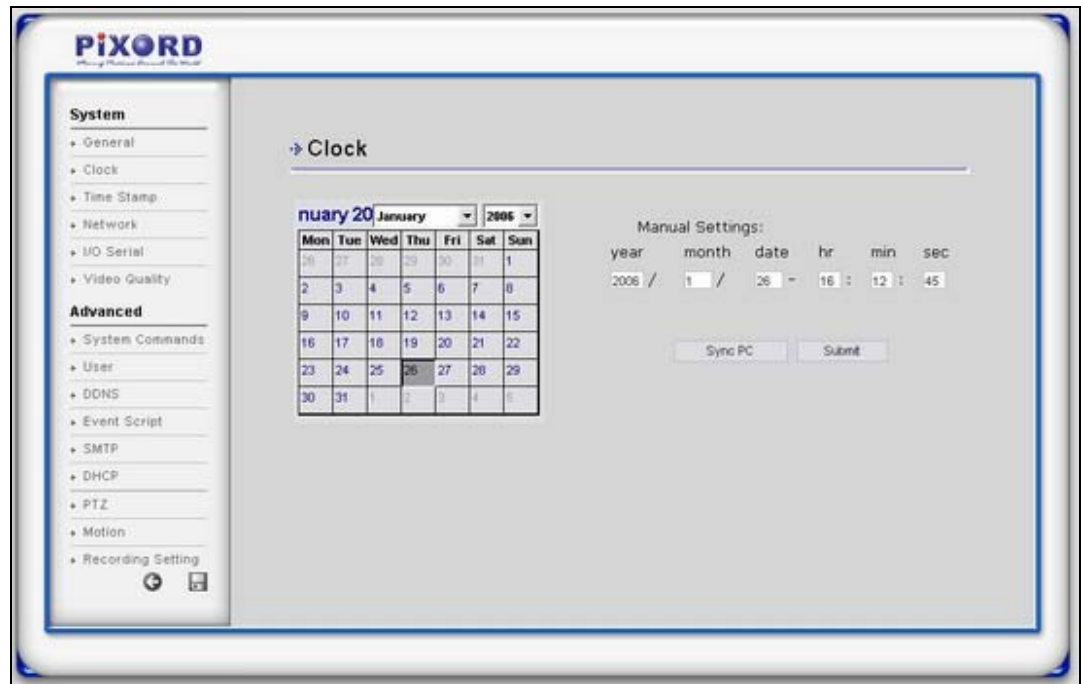
3.1 SYSTEM CONFIGURATION

3.1.1 General Server Settings



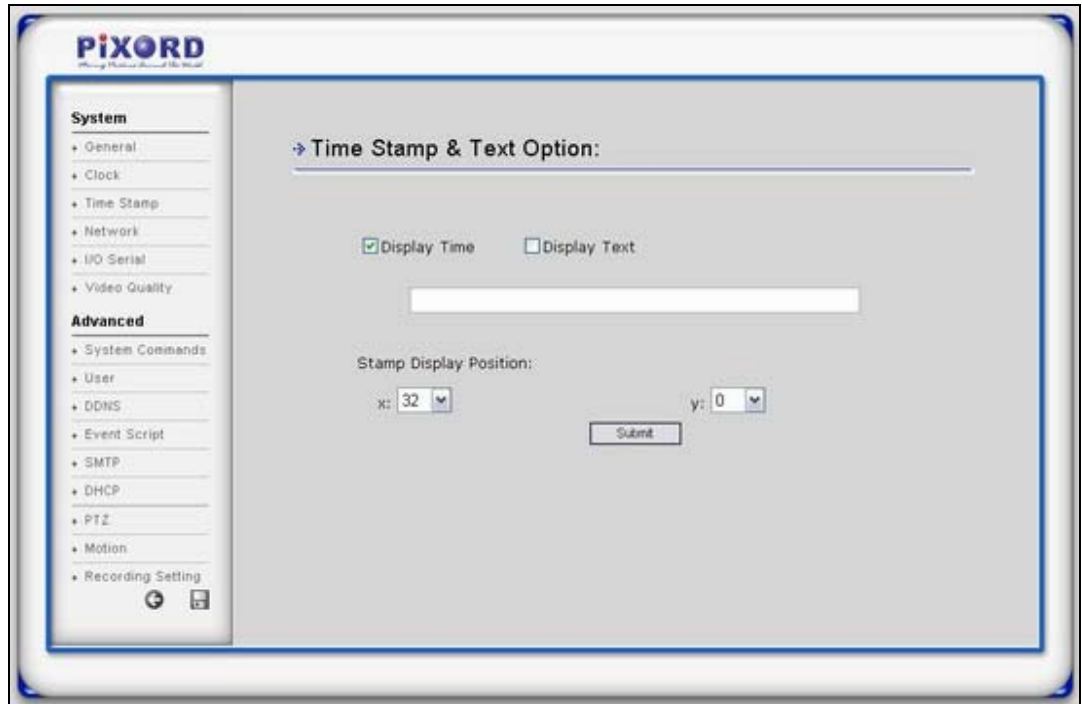
1. Specify server name. This name setting also used by PIXORD DDNS service to recognize each server, e.g. if you configure the name as “user” at the DDNS address “ddns.pixord.com”, then this PIXORD NC can be accessed by the URL <http://user.ddns.pixord.com> after registering to the PIXORD DDNS server.
2. Displays the MAC address information for this PIXORD NC. It's read only.
3. Alternative language option. The user may change the language of web contents for different applications.
4. Displays the firmware version's information.

3.1.2 Clock Settings



- 1 The built-in real-time clock of PIXORD NC provides accurate date/time of system even when power off. For different time zone or long period operation, you may need to adjust the clock --- just enter Time and Date information then click Submit.
2. Click "Sync PC" button to set the date/time of the PIXORD NC as your PC's. Click on "Submit" in order to save the configurations.

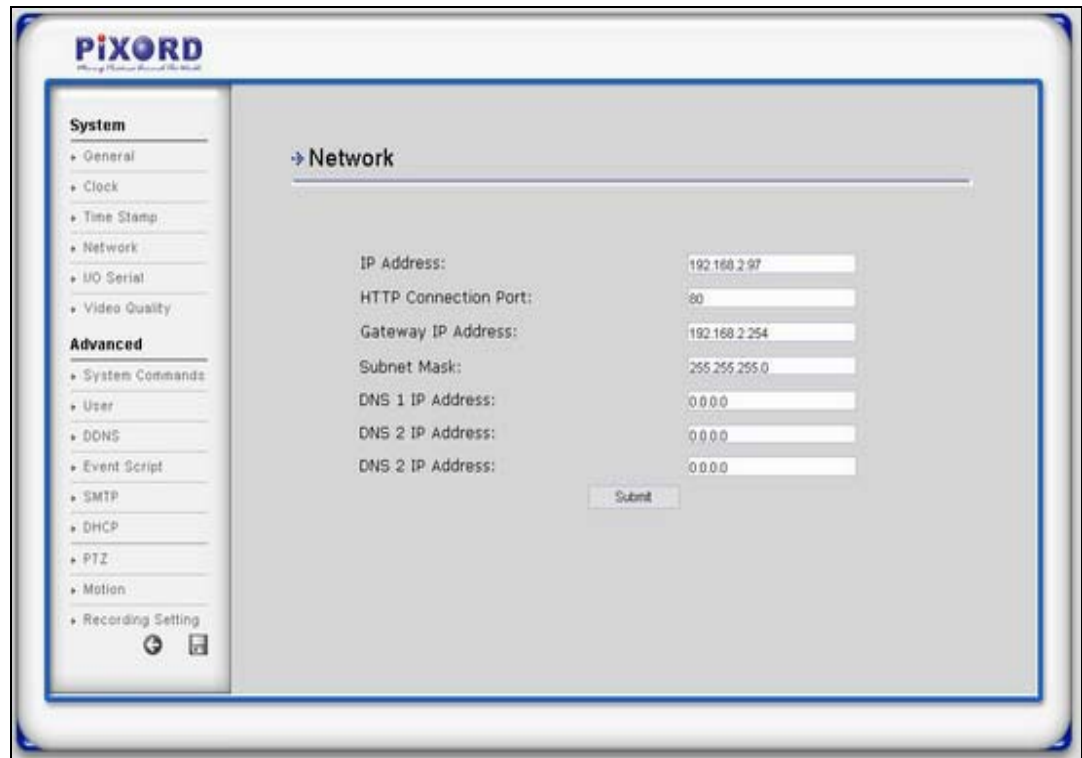
3.1.3 Time Stamp



The Time Stamp & Text Options will allow you to display the time and display a text string in your camera. Make a checkmark on their respective boxes and then click on the “Submit” button.

The valid characters are a – z, A – Z, 0 – 9, !, @, #, \$, %, &, *, (, and). Note: The maximum display block area (Time + Text) are 12X4 characters. String length more than 12 will feed to next line, and totally 4 lines available. More than 4 lines will strip off.

3.1.4 Network



➤ **IP Address :**

PIXORD NC IP address.

➤ **HTTP Connection Port :**

Specify the HTTP web server listen port for the client (browser) connection. The default uses port 80 (HTTP standard port), and the valid range from 0~65535. Consider that ports from 0 to 1024 are well known ports, if you customize the port, make sure you are setting the correct one.

➤ **Gateway IP Address :**

PIXORD NC traffics to the Internet should go through a Gateway, if this is not set, the NC can only be accessed through the Intranet (LAN).

➤ **Subnet Mask :**

Subnet mask of your LAN. Note that the IP Address above and Gateway IP Address below should be in the same subnet.

➤ **DNS IP Address :**

Domain name server information allows PIXORD NC to contact external server with a mnemonic domain name (e.g. ftp.PIXORD.com) instead of numeric IP address (e.g. 168.95.1.1).

Click “ Submit ” bottom if needed, then PIXORD NC will automatically store the setting and reboot system (within 5 seconds to complete boot sequence) to take

the setting effective.

3.1.5 Serial Port Management



Change the serial port mode and configure the serial port settings.

3.1.6 Video Adjustment



The PIXORD NC is capable of detecting NTSC/PAL automatically, video signal active/lose, fully automatic (plug & see) and it doesn't need any user configuration.

➤ **Quality Adjustments :**

To adjust video contrast, brightness, hue, color saturation, and quality. Note that the quality level affects the compression ratio and file size of the video.

NTSC			PAL		
Resolution	File size (kb)	Max fps	Resolution	File size (kb)	Max fps
FULL (704 x 480)	7 – 160	3	FULL (704 x 576)	9 – 200	3
SIF (352 x 240)	2 - 50	30	SIF (352 x 288)	2 - 60	25

(The Maximum performance is given in single user and only one video source in use.)

➤ **Frame Delay:**

To set the delay time between frames. The unit of delay time is 10 microseconds. You can limit the output bandwidth via setting the frame delay to do the flow control of the video stream. When the value is set to 0, it means no limitation on the video stream.

Click “ Save Changes ” bottom if needed for existing data changed in PIXORD NC when power off.

3.2 Advanced Configuration

3.2.1 System commands



➤ **1 The Reboot System**

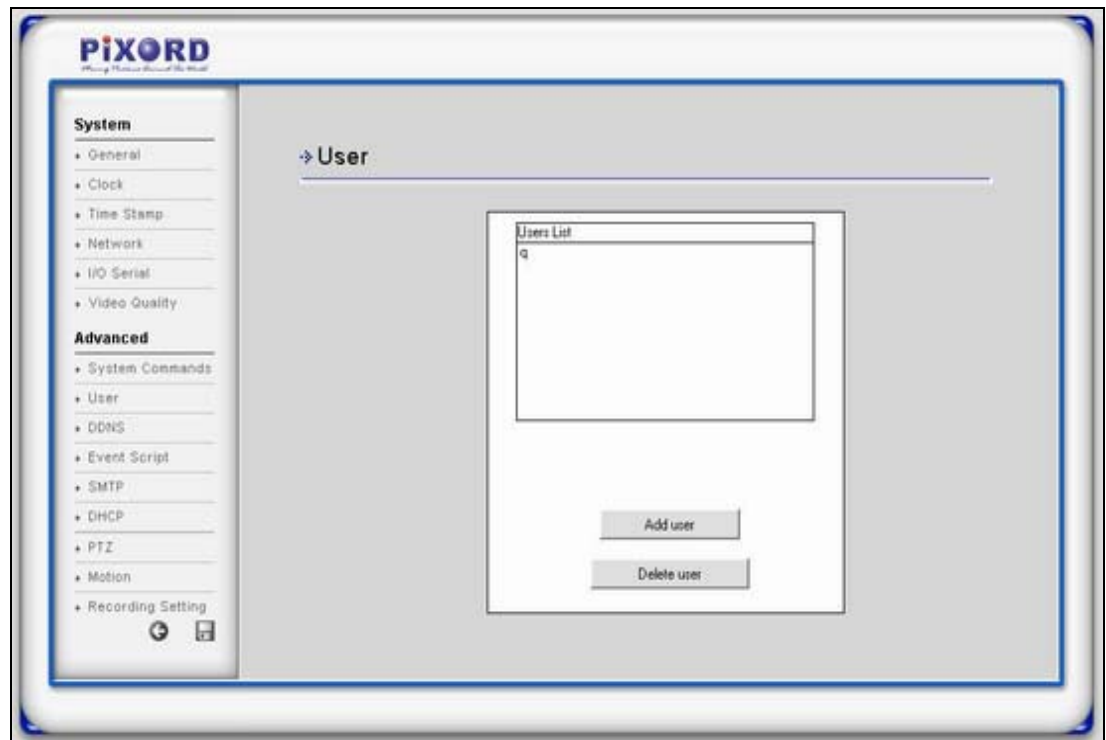
Forces PIXORD NC to restart.

➤ **2. The Load Default**

Recovers all factory settings except the network settings.

Note: The factory default just recovers the working setting but it isn't saved to the permanent memory (will back to previous setting after boot). To change the boot settings, you must set "Save Changes"

3.2.2 User Settings



1 As for factory default, no user is set.

Adding a User

- 1 New user name to login
2. Password for the user
3. Retype the password to confirm it
4. "Administrator User" is the user with administration permissions. The user has all permissions to operate the PIXORD NC, such as managing, configuring, and upgrading the software.
5. "General User" is the user without administration permissions. The user can be configured to have limited permissions to see video, for example, "capable of changing video size, etc".
6. Adds to the above new user into list.

When entering "submit" at the first time, PIXORD NC will ask for a new administrator to login. Once the users are in the list, you can choose the users in the list to be modified or removed.

7. Aborts the above operation

PIXORD NC provides 3- layer user security control

"Open for All" is a factory default when no user enters in User Configuration, it allows any user over Internet to monitor and configure the PIXORD NC. Note: that

the first user shall set and get administration privilege; otherwise, he can't get into administration page any more. If this happened, the unit must be set back to factory default.

Removing a User

- 1 Displays a list for the available users
2. Displays the permission for the listed users. Notice that this is read-only.
3. Adds another user to the unit
4. Removes the selected user.

3.2.3 Pixord DDNS Settings

DDNS substitutes a network identification number for one that's easier for humans to use.

For Internet users to access your computer, they must know your IP address — for example, when you run your own Web server, or use your router to make a VPN connection. Since the IP address changes, your Internet users will need to keep up with the changes. (As an analogy of this problem, imagine that your telephone number frequently changed without warning. Your friends would always be phoning the wrong number.)

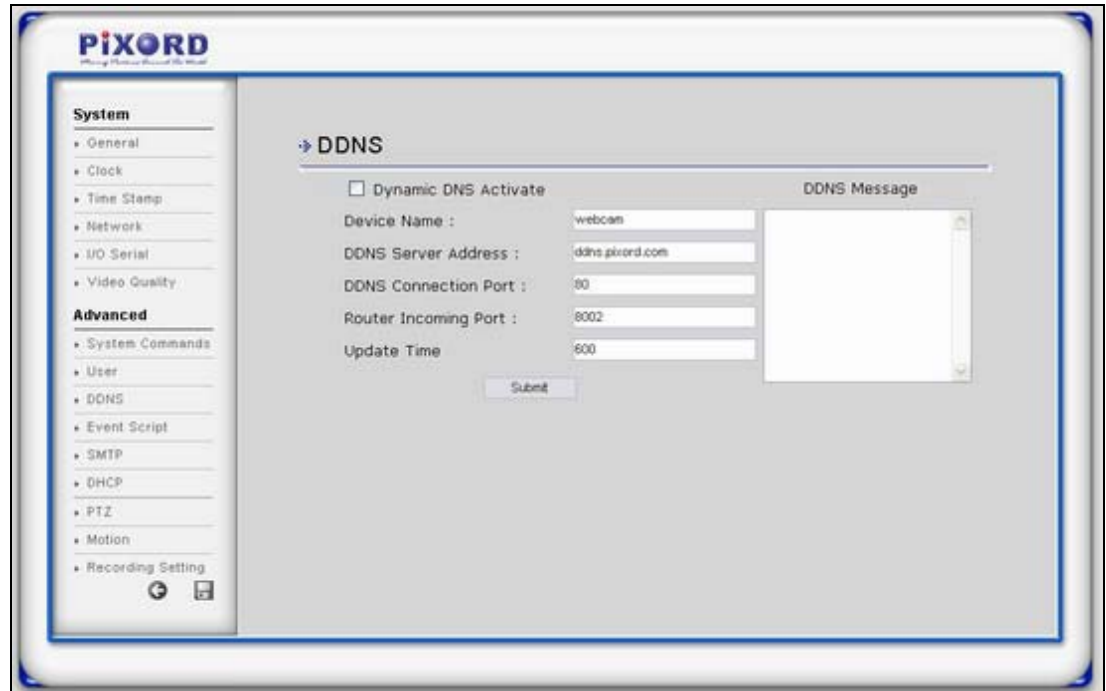
DDNS solves this problem. The company creates an account for you that registers an unchanging name, such as `myname.company.com`, and it automatically substitutes the current IP address — no matter what your ISP has changed it to. For remote user access, you must also configure your router for port forwarding — for services you make available on your computer.

The PIXORD DDNS (Dynamic Domain Name Service) can be used when the user wants to access PIXORD NC with an easy memorized name such as `http://demo.ddns.pixord.com` instead of `http://61.220.235.172`. This service is useful when the PIXORD NC is located behind Dial-up ADSL and IP sharing devices, which don't have fixed IP addresses and accessing the Camera server won't be easy since their IP addresses will change for every reconnection.

When the DDNS service is active in the PIXORD NC, it registers to the PIXORD DDNS server with its settings, such as server name, router virtual port number and update frequency, and so on. Using a fixed frequency, the PIXORD NC automatically updates the settings to the PIXORD DDNS server. So even if the IP has been changed because of the reconnection, the PIXORD DDNS server will be updated with the new settings.

Once the name is registered, e.g. "demo", accessing the camera can be done by simply typing `http://demo.ddns.pixord.com`.

Note: The PIXORD DDNS service is proprietary, which only works with PIXORD DDNS server and PIXORD brands of products.



➤ **Dynamic DNS Activate :**

Click to activate PIXORD DDNS service.

➤ **Device Name:**

Assign a name for the camera that will be used for the DDNS service

➤ **Dynamic DNS Sever Address :**

Specify address of PIXORD DDNS server, and the default is “ddns.pixord.com”

➤ **DDNS Connection Port :**

Specify PIXORD DDNS server listen port, and the default is “80”

➤ **Router Incoming Port :**

Specify your router listen port for PIXORD DDNS server to redirect. The router may configure the different port for incoming (Internet request) and outgoing (Intranet request), e.g. it may configure to redirect Internet HTTP (port 80) request to Intranet port 8000, then, in this case, we must configure the “Router Incoming Port” to 80, and inside the PIXORD NC Network settings should set HTTP port with 8000.

➤ **Update Time :**

Specify the PIXORD NC updated frequency in seconds, the default is 600 (10 minutes), this is the interval that the PIXORD NC will automatically send to the PIXORD DDNS server.

DDNS message : Returns messages from the remote PIXORD DDNS server, and displays some hints which will help to diagnose the reason why the registration fails.

-ddnsaddr CGI fail : It means that PIXORD NC can't communicate with Internet. Make sure your Network Configuration has the correct subnet mask, default gateway, and DNS1 setting.

-Already registered : Another user had registered this name; please change your register name by changing "server name".

Example:

How to Setup a PIXORD200 (IP address 192.168.0.200) behind a dialup ADSL router, access it by the name <http://demo.ddns.pixord.com> .

Configure the ADSL router with PPPoE enable; Lan IP, 192.168.0.254; and subnet mask, 255.255.255.0. Assign the ADSL router's virtual server with service port 80 to server IP 192.168.0.200. Configure PIXORD200 network configuration with IP address 192.168.0.200; subnet 255.255.255.0; DNS1 with valid DNS address such as 168.95.192.1 or 168.95.1.1; gateway IP address with 192.168.0.254 (router's IP); HTTP port with port 80.

Configure server name with "demo".

Configure DDNS with Activate; Address "ddns.pixord.com"; DDNS with port 80; Router Incoming port 80; and update time with 600 (10 minutes). Finally, click on submit.

If DDNS message success, then enter URL <http://demo.ddns.pixord.com> on browser. Consequentially, it will show PIXORD NC's home page.

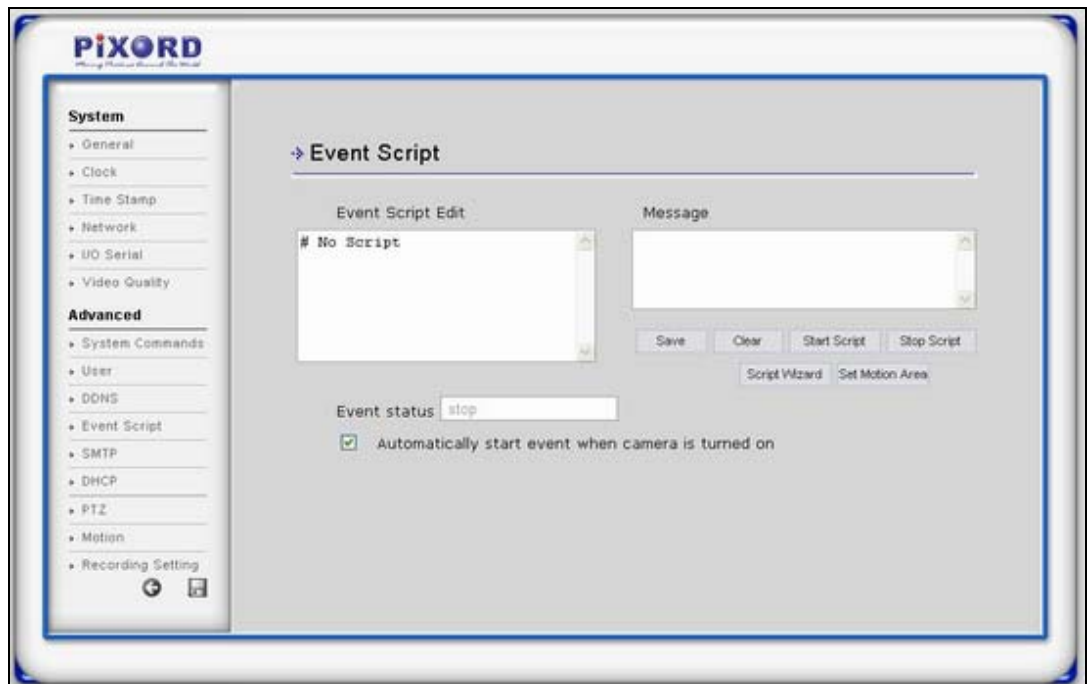
3.2.4 Event Script Edit

Application developers regularly wish to have different levels of customization within their own applications. Such customizations can be done through the event manager. The event system provides several trigger sources and action types, which allow administrators to record emergency images, such as Motion detection, IO control, FTP or EMAIL to the outside world in a simple process.

The PIXORD NC's event manager provides an event control through programmable Event Scripts which are the combination of several events. Each event works simultaneously. If one of the trigger conditions in the event script is satisfied, then the corresponding action will start to be executed accordingly. A comprehensive set of “trigger conditions” and “action commands” are allowed to fit in several applications without limitation.

To start the event manager, simply click on the Event icon, then the event frame will pop up.

There are two ways to enter the event script. One is using the “ Script Wizard ” which follows the procedure of filling up some basic commands, generating and appending a new script code to the edit window. The other one is editing the form manually, which is meant for experienced users who want control deeply the functionalities of the events operation. Please refer to the “ Event Script Programmers Guide ”, which can be downloaded from the PIXORD website.



➤ **Event Script Edit :**

Text window to enter event script manually.

➤ **Event Status :**

Indicates the event status, “Stop Now” or “Start Now”.

➤ **Event Auto Start when Power On :**

The flag is to set the event script auto start-up when the system is powered on.

➤ **Message :**

A window to show the results when below command icon pressed --- normally will show “OK”, “Parsing”, “Fail”, Or “Err String” which indicates the syntax error of parsing, and starts from the error position in the script.

➤ **Save Script :**

Command to save and parse current scripts in the “Event Script Edit” window. If any syntax errors are detected, the error message, indicating the starting position of syntax error, will be shown in the “Message” window.

Note: Any changes in “ Event Script Edit ” window must “ Save Script ” before “ Start Script ”; otherwise, the new changes will be lost and won't take effective. Also the changes won't be saved into permanent memory unless you click the “Save Changes” .

Clear : Command to clean up “Event Script Edit” window.

Start Script : Command to start the script execution.

Stop Script : Command to stop the script execution.

➤ **Script Wizard :**

Command to start the script wizard. It helps user to make simple script automatically by wizard, but the wizard supports only partial trigger and action commands. To fully leverage the complete functionalities of event script, please refer to “Event Script Programmers Guide”.

➤ **Set Motion Detection Area :**

In order to activate the motion detection, you must choose the detection area and start the motion detection script manually or by wizard.

3.2.5 SMTP



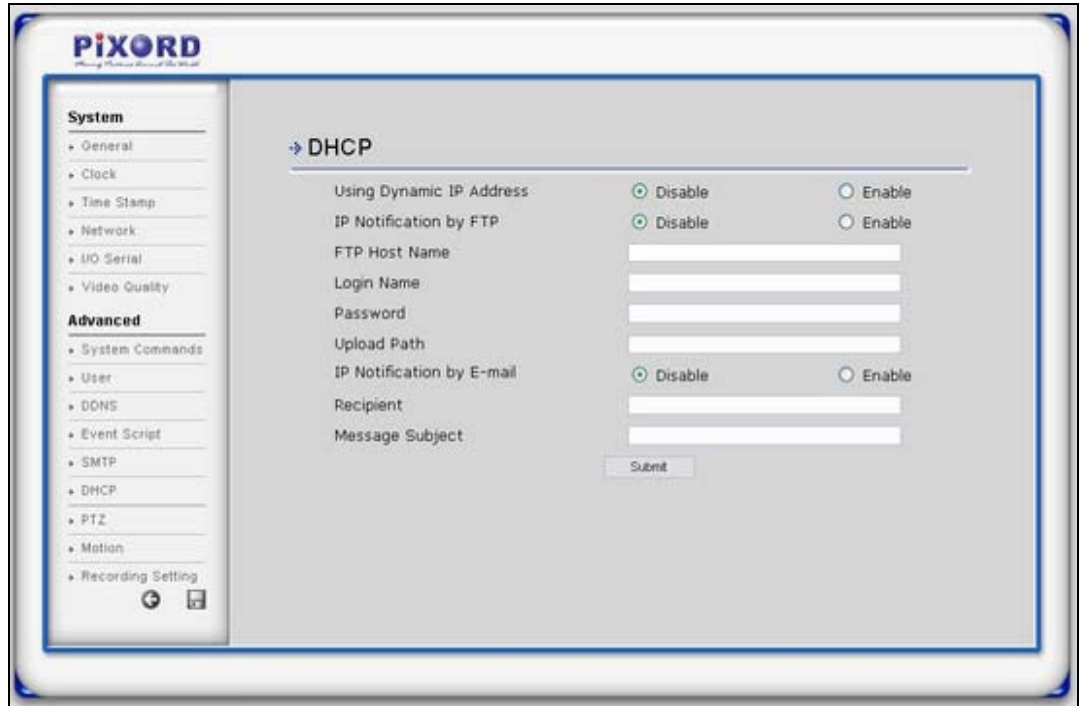
This configuration has to be set when the DHCP feature has to be used
Please refer to the next chapter DHCP for further information.

Sender's Email Address: Please input the Sender's email address, e.g.
john@mailhost.com

SMTP Server Address: Sender's SMTP Server domain name or IP Address,
e.g. mail.domain.com or 63.12.33.56

Authentication: User's Email address Username and Password

3.2.6 DHCP Settings



➤ **DHCP Settings :**

If there is a DHCP server installed on your LAN, you can enable DHCP to automatically obtain network settings such as IP address, subnet mask, default gateway, and DNS servers. Because the assigned IP address can be dynamically changed every time it obtains from the DHCP server, we provide a method called IP Notification to notify users which IP address is acquired.

➤ **IP Notification by FTP:**

If a FTP server is installed on your network, you can enable this option to obtain the newly assigned IP address of your PIXORD NC. A HTML file named.NewIP_XXXXXX.htm will appear under the upload path for you to link to PIXORD NC, where XXXXXX is the last six digits of the serial number.

FTP Host Name: FTP server address

Login Name: Name of your FTP account

Password: Password used to log in your FTP account

Upload Path: Path to put the file.

➤ **IP Notification by E-mail :**

With this option enabled, your PIXORD NC will send E-mail to you as soon as it obtains the IP address from DHCP.

Recipient: Your E-mail address.

Message subject: Subject of this E-mail.

3.2.7 PTZ

➤ Preset Point Setting



Note Title Setting: Currently the title setting is locked; it will be available in future firmware upgrades.

Preset Point selection: Select from the drop-down box the preset point to be set. There are 128 selectable preset points.

Once selected the preset point to be set, please define the following values.

Degree: Defines the degree in which the preset point will move towards. Values run from 1 to 15 degrees.

Speed: Select the speed in which the IP dome will reach this preset point.

Zoom In: Click this button to zoom in.

Zoom Out: Click this button to zoom out

Iris Near: Click this button to define the Iris

Iris Far: Click this button to define the iris

Auto Focus: Turn the Auto Focus On and Off

The preset points will run in order from 1 to 128 when Auto Pan is clicked on.

The Auto Pan feature will only run for those preset points that have been set.

Once the Auto Pan is done with the last preset point set, it will go back to the first preset point.

➤ **OSD (On Screen Display)**



OSD Open: Click on OSD open to access the hardware feature menu.

(For more information, please refer to the hardware manual)

OSD Close: Click on OSD Close to close menu from the screen.

Arrows (Up, Downs, Left, and Right): Such buttons were created for sliding through the menu options of the OSD.

For Item selection, please use the arrows Up and Down

For Item values change, please use the arrows Left and Right

For additional Item value changes, the OSD menu will display its option such as Arrows Down-and-Right.

Arrow Left of Submit button: After the changes have been to the OSD menu, click on this button to validate and make the changes permanent into the device.

Once completed the changes made, click on OSD close for closing the OSD menu.

➤ **Sequence**



The Sequence feature allows the Auto Pan to jump among different preset points without following a 1 to 128 order, as for example:

It allows in the Auto Pan mode to run the following sequence in the preset points:

1 – 10 – 2 – 20

(Note: If the sequence were not set, then the Auto Pan would ran 1 – 2 – 10 – 20)

For the Sequence feature the preset points must be previously defined.

Group: The groups are defined as the 128 preset points in which they will be running. In total there are 4 groups.

Point: Defines de order of the preset point.

Preset: Select which preset should be for the selected point.

Preset End: An End must be defined to stop the sequence mode.

Speed: Defines the speed in which the IP dome will take to reach such preset point.

Dwell time: Defines the time in which the preset point will remain at such.

Usage Example: For the sequence of running preset in the following order:

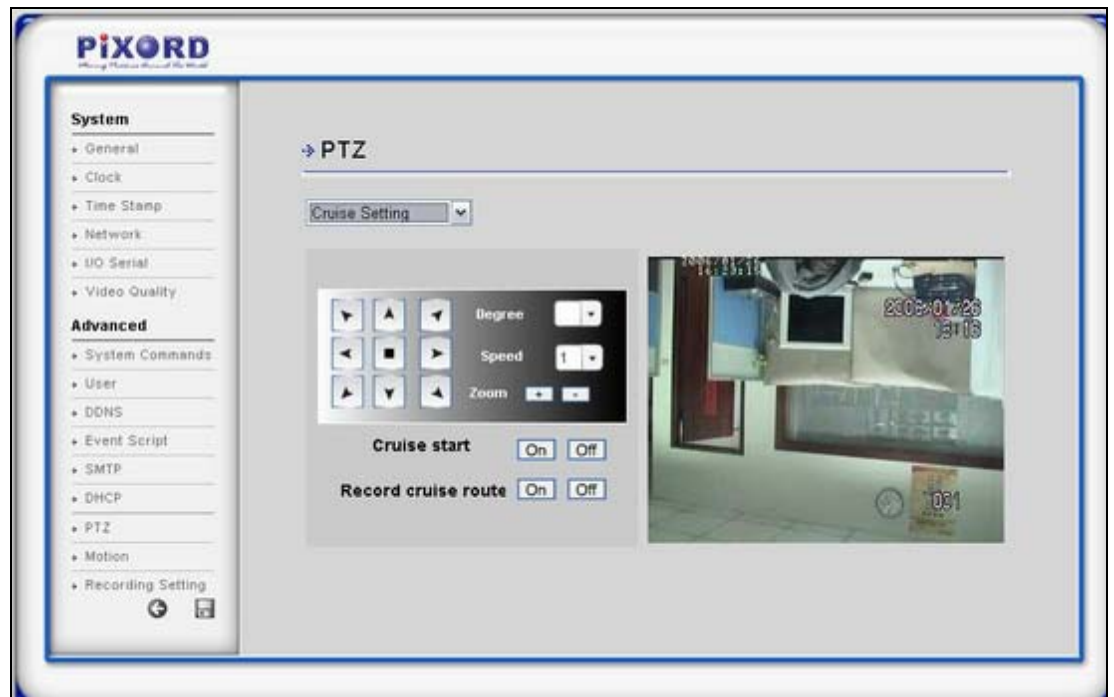
1 – 10- 2 – 20

User selection order	First	Second	Third	Fourth	Fifth
Preset (Values)	1	10	2	20	End
Point (Values)	1	2	3	4	5

Note:

Each value must be set and submitted in the above order for a sequenced order.
An “End” must be set in order to make the Sequence stop.

➤ **Cruise**



The Cruise feature allows the device to remember the sequence of the device made by user manually.

Contrary to the Auto Pan, which is predefined by Preset Points, the Cruise feature remembers the path in which the user moved the camera.

To start recording the path, click on the ON of the Record Cruise Route button.

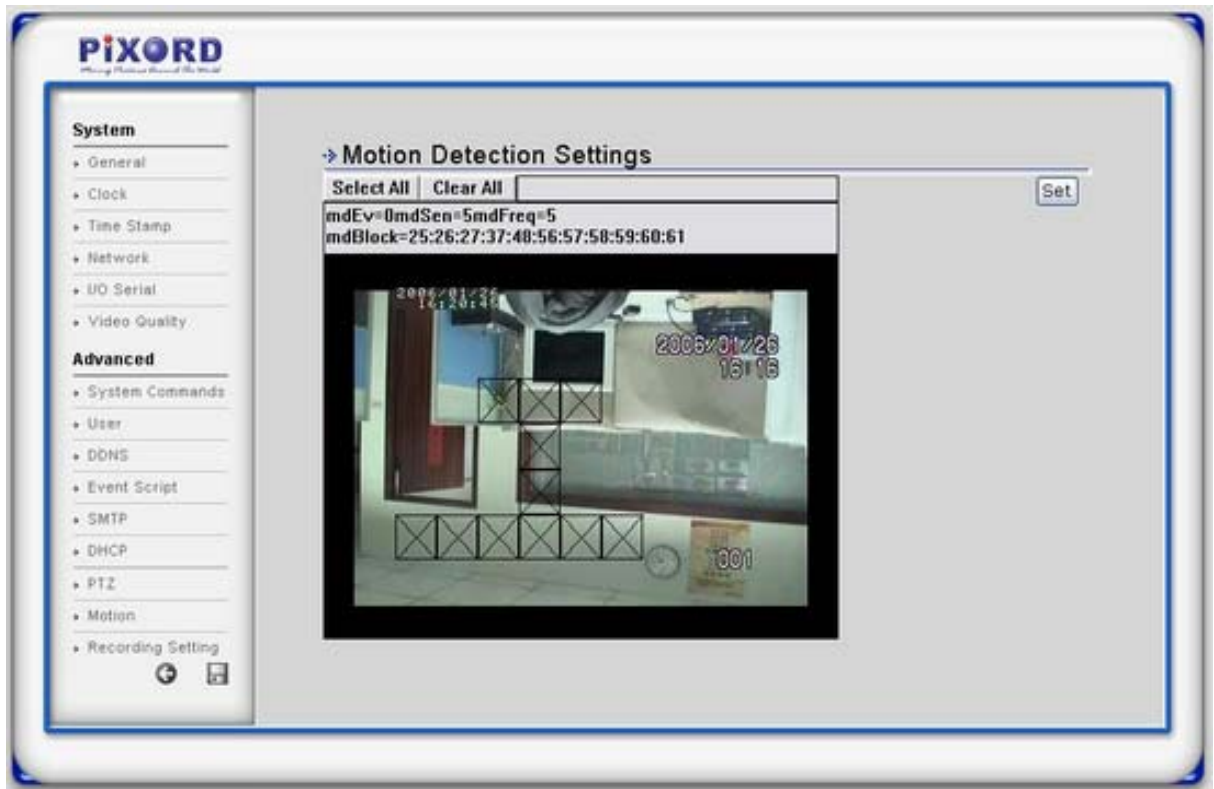
Move the camera towards the direction which the camera should be focused on, and also define the degree, Speed and Zooms.

Once the route is complete, click on OFF of the Record Cruise Route button.

To test the Cruise route, click on the ON of the Cruise Start.

To stop the testing, click on the OFF of the Cruise Start.

3.2.8 Motion Area Selection



Motion Detection Region Selection: Move the mouse to the regions in video window with white blocks to determine the motion trigger areas. After setting with clicking the left button of the mouse, the selected areas will be marked.

3.2.9 Recording Settings



- 1 Total File Space: Set the total file space for the recording. The unit is in MB.
2. Single File Space: Set the file space that a single will be using. The unit is in MB.
3. File Name: Input the name for the file
4. Save File Path: Indicate which folder should be the file saved to.
5. Append Existing File: Make a checkmark on the box if you choose that the new recording should be appended to the previous recorded file.
6. Max Frame Rate: Input the frame rate for the recording.
7. Think to Time Stamp: This feature enables the file to be saved according to the time. When the video file is displayed, the video will make a match between the frames and the time.
8. Cycle Recording: This feature indicates if the old space should be used or not for the recording. Make a checkmark in order to enable this function. If you enable this feature, old files will be deleted.